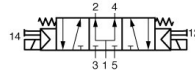
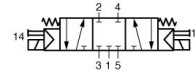


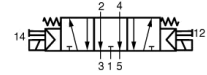
5/3-Way solenoid valve pilot-operated, 1/8" ...1/2" Series K53W2S



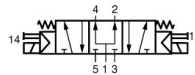
K53W2S318



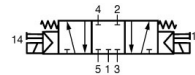
K53W2S618



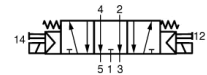
K53W2S918



K53W2S314, K53W2S312



K53W2S614, K53W2S612



K53P2914, K53W2S912

Design type	5/3-way solenoid valve pilot-operated, Actuation electric/electric, Manual emergency override
Connection	G1/8" ...G1/2" according to ISO228/1
Materials	Body Nickel-plated aluminium, Slide valve Aluminium, Seals NBR
Mounting type	Through holes in the valve body
Mounting position	any
Medium	filtered and lubricated or non-lubricated compressed air
Medium temperature	0...+40°C
Ambient temperature	-10...+50°C

Electrical data:

Coil type	CS, Connector width 16mm
Standard voltage	230V/50-60Hz, 24V/50-60Hz, 24VDC
Special voltages	115V/50-60Hz, 12VDC, further on request
Permissible voltage fluctuation	±10%
Power consumption	see table "Solenoid coil"
Duty cycle	100% duty cycle (continuous operation)
Degree of protection	IP65 according to EN 60529 with correctly mounted device connector (protection against dust ingress and water jets)

Notes:

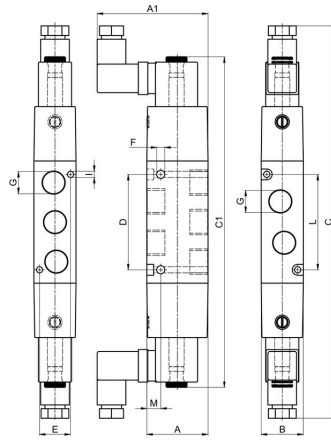
Application	Valve size 1/8" only with silencer series SLN-RB
Scope of delivery	incl. device socket Cable entry M12x1
	When ordering, please specify voltage and type of current Technical documentation for base plate see separate data sheet CAD files are available in the STASTO Store at www.stasto.eu

Type code

K 53 W2S	3	18	CS - 230/50-60Hz
	3 pressurized	18G1/8"	230V/50-60Hz
	6 locked	14G1/4"	115V/50-60Hz
	9 exhausted	12G1/2"	24V/50-60Hz
			24VDC
			12VDC



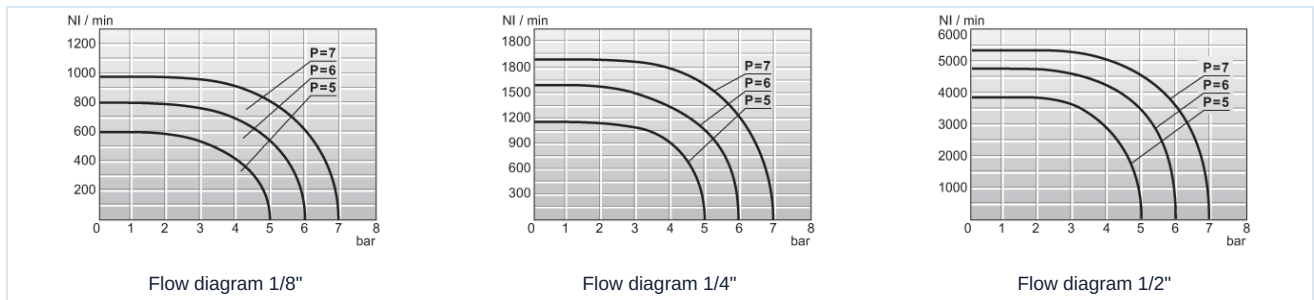
Dimensions



Connection G	Nominal size DN [mm]	Pressure range [bar]	A	A1	B	C	C1	D	E	F	I	L	M	Flow rate [Nl/min]	Type
G1/8"	6	3...9	28	53	18	180	152	35	13	3,2	3,2	35	8	552	K53W2S.18
G1/4"	8	3...9	32	55	22	202	174	50	16,2	4,2	3,5	50	7,3	1040	K53W2S.14
G1/2"	14	3...9	50	75	30	240	210	45,6	-	5,2	-	-	11	3500	K53W2S.12

Reference pressure 6bar, Reference temperature 20°C

Flow diagram



Solenoid coil

		Voltage	Power consumption at 20°C	Type
		12V DC	2,4W	CS01200
		24VDC	2,4W	CS02400
		24V/50-60Hz	3,5VA	CS02450
		115V/50-60Hz	3,5VA	CS11550
		230V/50-60Hz	3,5VA	CS23050

For details on the device socket, see separate data sheet

Switching time

Connection G	Switching time [ms]	
	AC ONE/EXHAUST	DC ONE/EXHAUST
G1/8"	83	100
G1/4"	83	100
G1/2"	77	125

Illustrations non-binding

Design, dimensional and material changes reserved

Pneumatics / Way-valves - electrically / pneumatically / 3/2- 5/2- 5/3-way valves - series K (connector size 16mm) / 5/3-way valve Series K5.W

Version 6

138286 / Generated 2026/24 EN

MADE IN EUROPE

+43 512 52076

austria@stasto.eu

© STASTO Automation KG

www.stasto.com

Open series online

Page 2 / 2

