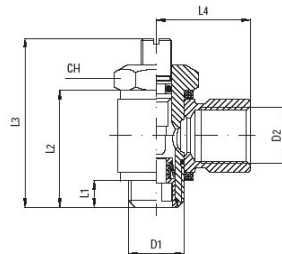


Swivel throttle valve Series MV17B



Design type	Needle valve, with female thread swivel fitting
Material	Body Nickel-plated brass, Seals NBR and Polyamide (PA)
Function	Flow control, Throttle direction both sides, Actuation with slotted screw
Connection	M5 after ISO R/262, G1/8" up to G1/2" after ISO228/1
Mounting position	any
Medium	Compressed air, neutral gases
Medium temperature	0°C up to +70°C
Operating pressure	-0,75 up to 10 bar

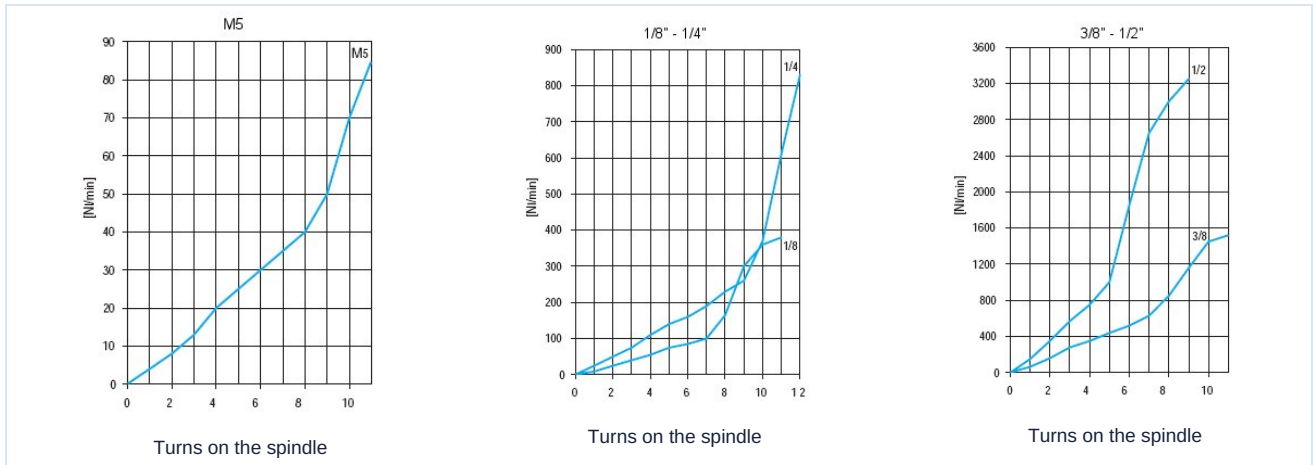
Dimensions



D1	D2	L1	L2	L3max.	L4	Throttle direction	CH	Weight [g]	Type
M5	M5	4	16	23,5	11	both sides	8	10	MV17-00-M5-B
G1/8"	G1/8"	5	24	32	16	both sides	14	32	MV17-00-18-B
G1/4"	G1/4"	6,5	27,5	40	22	both sides	17	58	MV17-00-14-B
G3/8"	G3/8"	7	31	48	26	both sides	20	98	MV17-00-38-B
G1/2"	G1/2"	9	38	61	32	both sides	26	173	MV17-00-12-B



Flow diagrams



Illustrations non-binding

Design, dimensional and material changes reserved

[Pneumatics](#) / [Flow control valves](#) / [Other materials - P04](#) / [Banjo flow control valve Series MV17-B](#)

