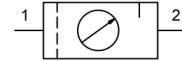


# Maintenance unit G1/8" Series MU303



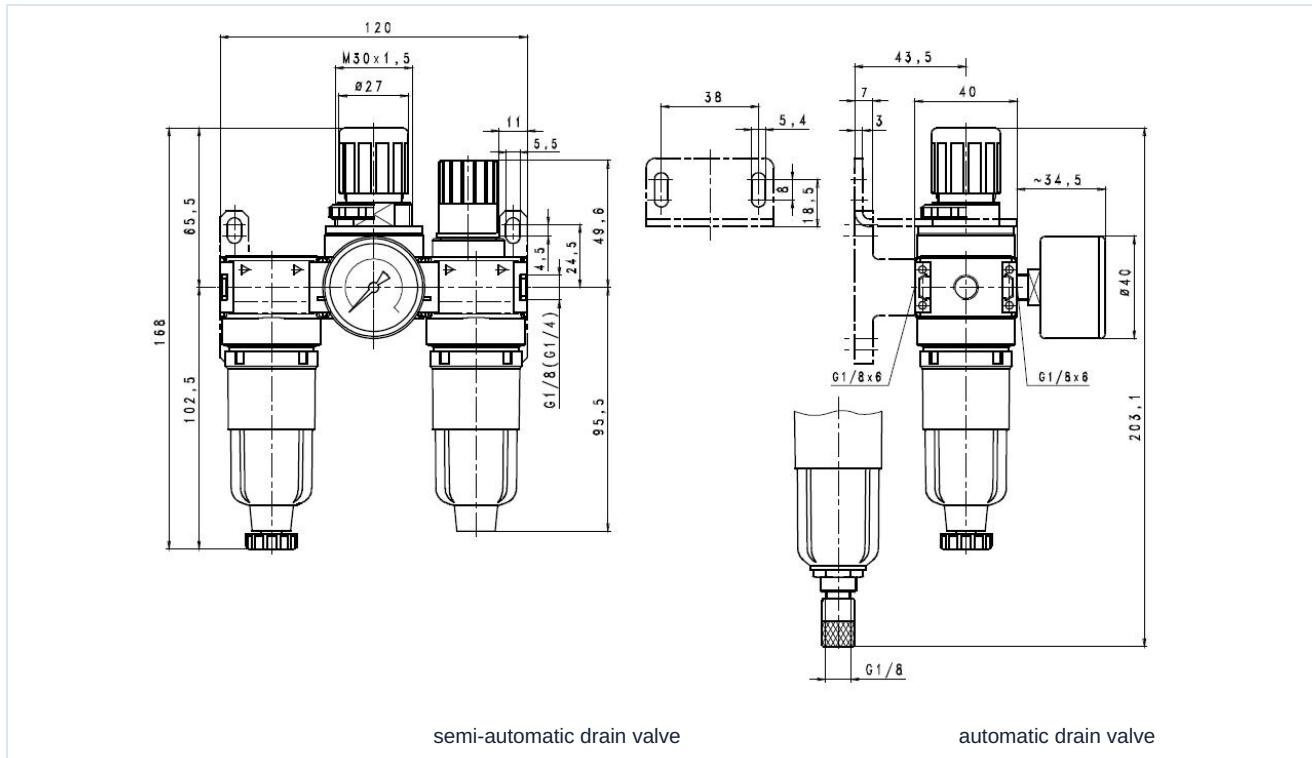
Design type	Diaphragm pressure regulator with secondary venting, Centrifugal force principle filter, Sintered filter element, semi-automatic drain valve, Proportional lubricator
Connection	G1/8" according to ISO228/1
Materials	Housing Zinc die casting, Condensate reservoir Polycarbonate or Metal, Seals NBR, Spring bonnet and bottom screw POM
Function	Secondary pressure regulation
Locking mechanism	Pressure setting can be locked by pressing in the rotary knob
Filter element	5µm
Mounting type	Installation in piping system, Locknut or Wall mounting using mounting bracket
Mounting position	vertical, Drain screw bottom
Medium	Compressed air
Oil recommendation	HP32A (Temperature range 0...50°C), NR32 (Temperature range -35...85°C)
Medium temperature	with plastic bowl 0...+60°C, with metal bowl 0...+60°C (with appropriately conditioned compressed air -10...+60°C)
Ambient temperature	with plastic bowl 0...+60°C, with metal bowl -10...+60°C
Inlet pressure	maximum 12bar, with automatic drain valve 1,5...12bar
Control ranges	0,5...10bar (0,1...3bar and 0,2...6bar on request)
Flow direction	is marked by an arrow
Scope of delivery	including pressure gauge

## Order code

		MU303 - 18 - 0,1/3 - M - A			
<b>Connection</b>	1/8"	18			
<b>Pressure range</b>	0,1...3bar	0,1/3			
	0,2...6bar	0,2/6			
	0,5...10bar	0,5/10			
<b>Reservoir</b>	Plastic reservoir (Leave blank)				
	Metal container		M		
<b>Drain valve</b>	semi-automatic drain valve (Leave blank)				
	automatic drain valve			A	



## Dimensional drawing, Characteristics



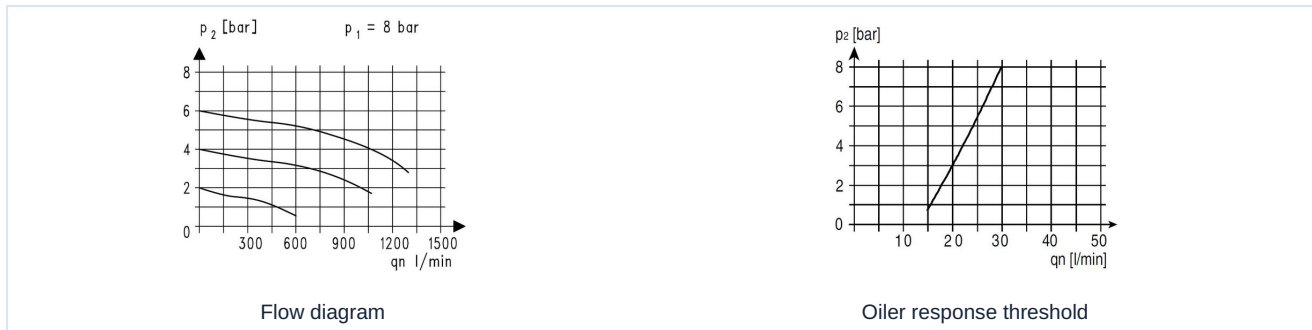
semi-automatic drain valve

automatic drain valve

Connection	Flow rate at 6 bar* [Nl/min]	max. inlet pressure [bar]	Pressure range [bar]	Type
G1/8"	700	12	0,5...10	MU303-18-0,5/10
G1/8"	700	12	0,5...10	MU303-18-0,5/10-M

\*Flow rate data at an inlet pressure of 8 bar, an outlet pressure of 6 bar and a pressure drop of 1 bar

## Flow diagram, Oiler response threshold



Flow diagram

Oiler response threshold

## Accessories

Designation	Type
Locknut M30x1,5	MPN03-18/38
Holding angle bracket with neck nut	MMP03-18/38

Illustrations non-binding  
Design, dimensional and material changes reserved

Pneumatics / Regulators, filters and lubricators / Maintenance devices - series Modul / Maintenance unit Series Modul MU303-M / [MU303-18-0,5/10-M] Maintenance unit 1/8"-700-12-5

Version 5

138858 / Generated 2026/23 EN

MADE IN EUROPE

+43 512 52076

austria@stasto.eu

© STASTO Automation KG

www.stasto.com

Open series online

Page 2 / 2

