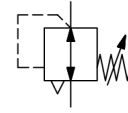


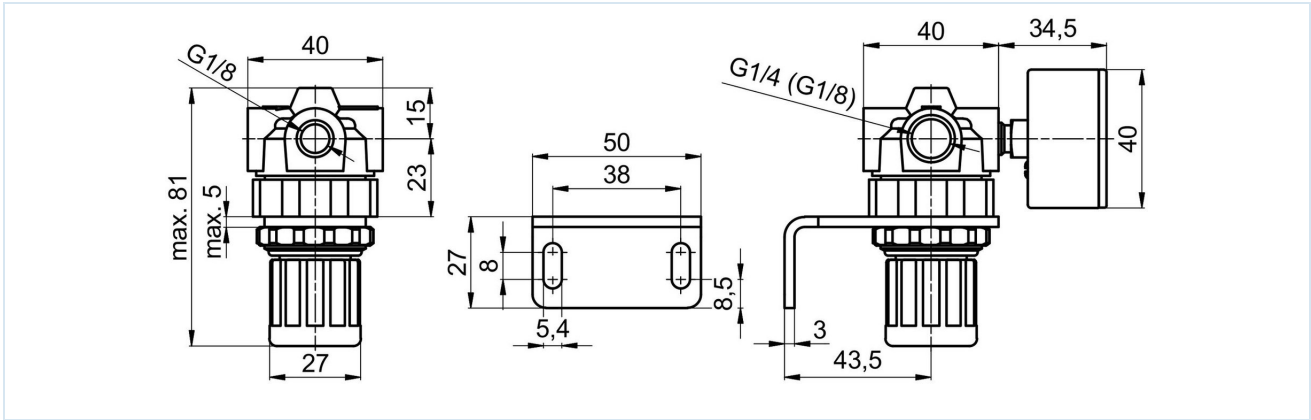
Pressure regulator G1/8" and G1/4" Series Gold RE05



Design type	Diaphragm pressure regulator with secondary venting
Connection	G1/8"...G1/4" according to ISO228/1
Materials	Housing Zinc die casting, Seals NBR, Spring cap POM
Function	Secondary pressure regulation
Locking mechanism	Pressure setting can be locked by pressing in the rotary knob
Mounting position	any
Medium	filtered compressed air
Medium temperature	0...+60°C, (with appropriately conditioned compressed air -10...+60°C)
Ambient temperature	-10...+60°C
Inlet pressure	max. 25bar
Control ranges	0,1...3/0,2...6/0,5...10 and 0,5...16bar
Flow direction	is marked by an arrow
Scope of delivery	including pressure gauge, Panel nut



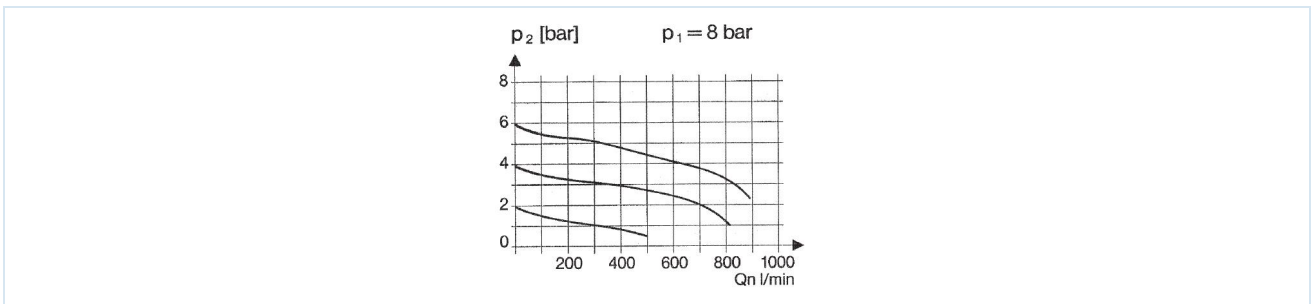
Dimensional drawing



Connection	Flow rate at 6 bar* [Nl/min]	Pressure range [bar]	Type
G1/8"	330	0,1...3	RE05-18-0,1/3-MA
G1/8"	330	0,2...6	RE05-18-0,2/6-MA
G1/8"	330	0,5...10	RE05-18-0,5/10-MA
G1/8"	330	0,5...16	RE05-18-0,5/16-MA
G1/4"	330	0,1...3	RE05-14-0,1/3-MA
G1/4"	330	0,2...6	RE05-14-0,2/6-MA
G1/4"	330	0,5...10	RE05-14-0,5/10-MA
G1/4"	330	0,5...16	RE05-14-0,5/16-MA

Flow rate data at an inlet pressure of 8 bar, an outlet pressure of 6 bar and a pressure drop of 1 bar

Flow diagram for control range 0,5...10 bar



Accessories

Designation	Type
Locknut M30x1,5	MPN05-18/14
Holding angle bracket with neck nut M30x1,5	MMP05-18/14

Illustrations non-binding

Design, dimensional and material changes reserved

Pneumatics / Regulators, filters and lubricators / Maintenance devices - series Gold / Pressure regulator Series Gold RE05 / [RE05-14-0,5/10-MA] Pressure regulator RE05-14-0,5/10-MA

Version 5

139009 / Generated 2026/23 EN

MADE IN EUROPE

+43 512 52076

austria@stasto.eu

© STASTO Automation KG

www.stasto.com

Open series online

Page 2 / 2

