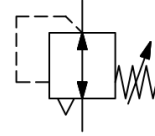


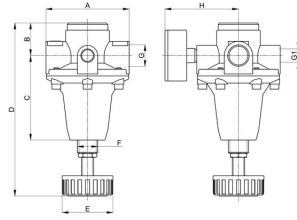
Pressure regulator G1/4" ... G1/2" Series RE23



| | |
|---------------------|-----------------------------------------------------------------------|
| Design type | Diaphragm pressure regulator with secondary venting |
| Connection | G1/4" ... G1/2" according to ISO228/1 |
| Materials | Housing and spring bonnet Brass, Seals NBR |
| Function | Secondary pressure regulation |
| Mounting position | any |
| Medium | filtered compressed air |
| Medium temperature | 0...+90°C, (with appropriately conditioned compressed air -20...90°C) |
| Ambient temperature | -20 ... +80°C |
| Inlet pressure | max. 40bar |
| Control ranges | 0,5...3/ 0,5...6/ 0,5...10 / 0,5...16 and 0,5...25bar |
| Flow direction | is marked by an arrow |
| Scope of delivery | including pressure gauge |



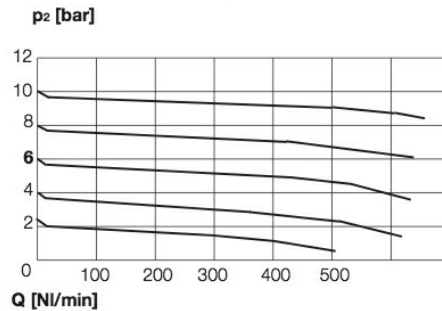
Dimensional drawing



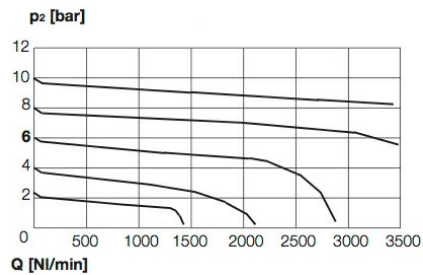
| Connection G | A | B | C | D | E | F | G1 | H | Flow rate at 6 bar [Nl/min] | Pressure range [bar] | Weight [approx. kg] | Type |
|--------------|----|----|----|-----|----|---------|------|----|-----------------------------|----------------------|---------------------|-------------------|
| G1/4" | 45 | 23 | 35 | 81 | 40 | M20x1,5 | 1/4" | 66 | 430 | 0,5...3 | 0,50 | RE23-14-0,5/3-MA |
| G1/4" | 45 | 23 | 35 | 81 | 40 | M20x1,5 | 1/4" | 66 | 430 | 0,5...6 | 0,50 | RE23-14-0,5/6-MA |
| G1/4" | 45 | 23 | 35 | 81 | 40 | M20x1,5 | 1/4" | 66 | 430 | 0,5...10 | 0,50 | RE23-14-0,5/10-MA |
| G1/4" | 45 | 23 | 35 | 81 | 40 | M20x1,5 | 1/4" | 66 | 430 | 0,5...16 | 0,50 | RE23-14-0,5/16-MA |
| G1/4" | 45 | 23 | 35 | 81 | 40 | M20x1,5 | 1/4" | 66 | 430 | 0,5...25 | 0,50 | RE23-14-0,5/25-MA |
| G1/2 | 72 | 30 | 52 | 115 | 45 | M28x1,5 | 1/4" | 73 | 1250 | 0,5...3 | 1,10 | RE23-12-0,5/3-MA |
| G1/2 | 72 | 30 | 52 | 115 | 45 | M28x1,5 | 1/4" | 73 | 1250 | 0,5...6 | 1,10 | RE23-12-0,5/6-MA |
| G1/2 | 72 | 30 | 52 | 115 | 45 | M28x1,5 | 1/4" | 73 | 1250 | 0,5...10 | 1,10 | RE23-12-0,5/10-MA |
| G1/2 | 72 | 30 | 52 | 115 | 45 | M28x1,5 | 1/4" | 73 | 1250 | 0,5...16 | 1,10 | RE23-12-0,5/16-MA |
| G1/2 | 72 | 30 | 52 | 115 | 45 | M28x1,5 | 1/4" | 73 | 1250 | 0,5...25 | 1,10 | RE23-12-0,5/25-MA |

Flow rate data at an inlet pressure of 8 bar, an outlet pressure of 6 bar and a pressure drop of 1 bar

Flow diagram RE23-14 at inlet pressure p2+2bar



Flow diagram RE23-12 at inlet pressure p2+2bar



Accessories

| Designation | Type |
|---------------|----------|
| Holding angle | MMP23-14 |
| Holding angle | MMP23-12 |

Illustrations non-binding

Version 5

139051 / Generated 2026/23 EN

MADE IN EUROPE

+43 512 52076

austria@stasto.eu

© STASTO Automation KG

www.stasto.com

Open series online

Page 2 / 3



