

2/2 - way solenoid valve - combined operated, 1 1/4" and 1 1/2" series 21HF



design	2/2-way solenoidvalve with diaphragm, combined operated, normally closed
connection	G1 1/4" to G1 1/2" according to ISO228/1
materials	body brass, inner parts brass and stainless steel similar to AISI 430F, seals FKM, EPDM or NBR
type of fixing	installed into rigid pipework
mounting position	preferably with a vertical electrical part
application	gaseous and liquid fluids which do not affect the used materials
viscosity	max. 12 mm ² /s (cst) respectively 2°E
switching time	according to operating pressure, media and nominal diameter
medium temperature	dependent on sealing material
ambient temperature	-10°C to +60°C (at higher temperatures max. +80°C, use coil GDH)
electrical specification	
type of current	AC and DC
standard voltage	230V/50-60Hz, 24V/50-60Hz, 24VDC
special voltage	on request
acceptable voltage tolerance	± 10%
consumption	see to the table "power consumption of coils"
duty cycle	100% duty cycle (continuous operation)
protection class	IP65 according to EN 60529 for a correctly mounted connector (protection against the penetration of dust and jet water)
direction for use	please specify voltage and type of current by order. we always recommend connecting a strainer in front of the valve, otherwise malfunction can occur in the event of contaminated medium. these valves can also be used for rough vacuum.

type code

21HF	7	K0	V	350	BDA	-	230V/50-60Hz
	7	G1 1/4"	B NBR	nominal diameter	coil		230V/50-60Hz
	8	G1 1/2"	E EPDM	350 35 mm (G1 1/4")	BDA standard coil		24V/50-60Hz
			V FKM	400 40 mm (G1 1/2")	BDP coil for humid areas		24VDC
					GDH coil for DC		

application of the individual seal materials;

material	medium temperature	examples of use
NBR	-10 to 90°C	air, water, neutral gases and liquids
FKM	-10 to 140°C	oils, petrol, diesel
EPDM	-10 to 140°C	water, steam

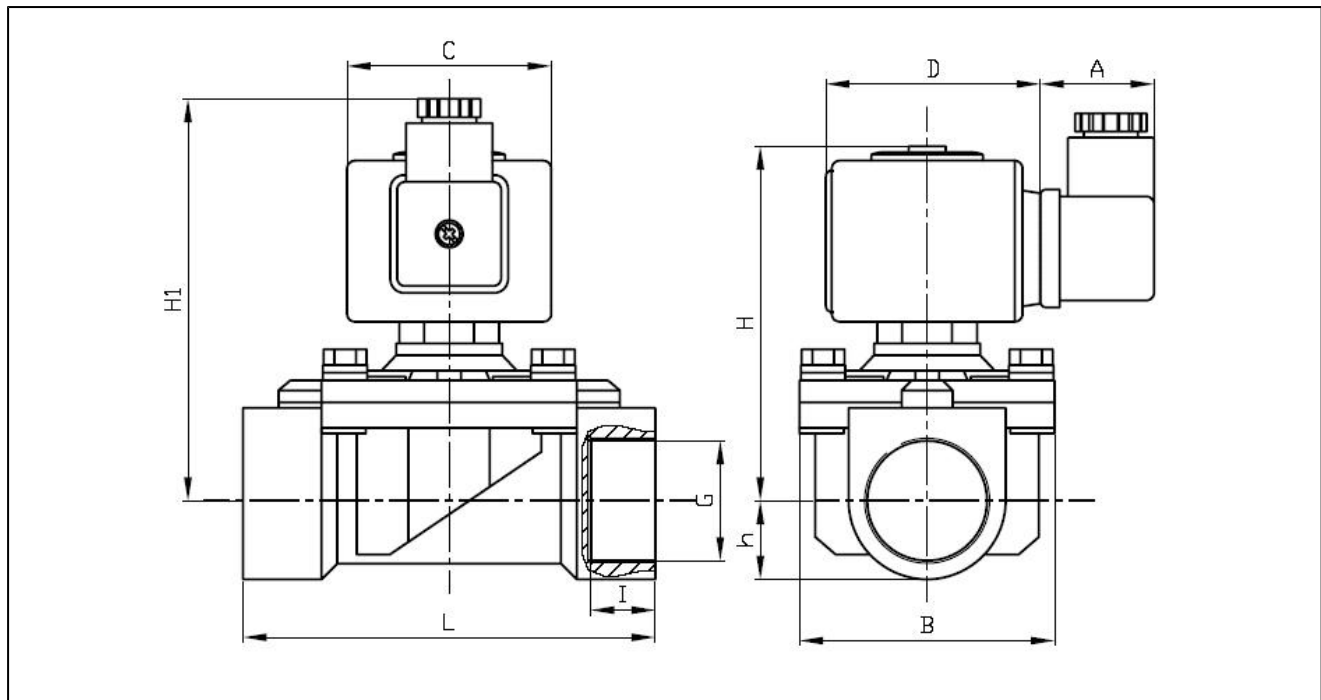
coils

type	protection class	use
BDA	IP65	medium temperature to a maximum of 120°C
BDP	IP65	medium temperature to a maximum of 160°C, high humidity
GDH	IP65	medium temperature to a maximum of 180°C, high humidity

consumption of the coils

	coil BDA	coil BDP	coil GDH
pull in power in VA (AC)	25	25	43
holding power in VA (AC)	14,5	14,5	27
holding power in W (AC)	8	8	14
holding power in W (DC) operating temperature	8	8	14

dimensions



connection G	nominal diameter DN[mm]	pressure range [bar]		A	B	C	D	H	H1	h	I	L	kv value [m ³ /h water]	coil	weight [approx. kg]	type
		AC	DC													
G11/4"	35	0 - 16	-	28	94	30	42	130	142	27	21	128	16,2	BD.	2,45	21HF7K0B350
G11/4"	35	0 - 16	6	28	94	52	55	130	142	27	21	128	16,2	GDH	2,75	21HF7K0B350
G11/2"	40	0 - 16	-	28	94	30	42	130	142	27	21	128	16,8	BD.	2,25	21HF8K0V400
G11/2"	40	0 - 16	6	28	94	52	55	130	142	27	21	128	16,8	GDH	2,55	21HF8K0V400

illustrations are for information only and are non-binding
all designs, configurations, measurements and materials are subject to change without prior notice