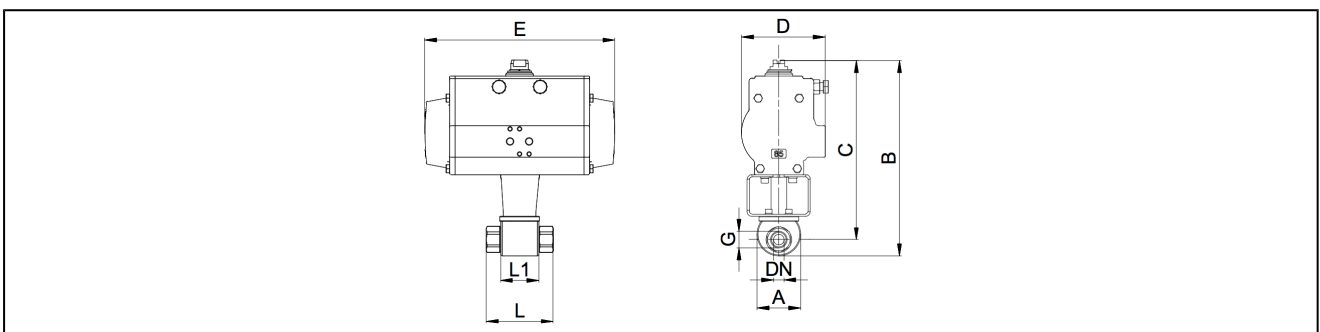


ball valves made of stainless steel with pneumatic actuator series BAH1-...-SSKV and BAK1-...-SSKV



design	actuator: piston actuator with 2 counteracting pistons, elastic sealing, actuator complying with ISO 5211 or rather to NAMUR-references, end position $\pm 5^\circ$ adjustable on both sides
connection	G1/8"...G1" according to ISO228/1
materials	actuator: hard-anodised aluminum, pinion nickel-plated steel, piston guide POM, seals NBR
standard construction	ball valve: body and ball stainless steel AISI 316Ti, seal PEEK/FKM
function	delivery in double acting or single acting design
type of fixing	installed into rigid pipework
mounting position	any
control medium	filtered and lubricated or non lubricated compressed air
application	gaseous and liquid fluids which do not affect the used materials
medium temperature	-20...+100°C
ambient temperature	-20...+85°C
control pressure	5,5-8bar, adaptation for lower control pressures on request
operating pressure	0bar to operating pressure according to table
special version	pinion made of stainless steel, ATEX, ambient temperatures of -40°C...+85°C, respectively -20°C...+150°C on request
accessories	mounted manual pneumatic or electric control valve electric end position signal, I/P or P/P positioner control of moving speed
order information	in case of order please specify control pressure, operating medium and operating pressure
direction for use	pressure and temperature values are maximum values for lubricating or not degreasing mediums. in particular degreasing media reduce the indicated values and increase the necessary torque. In border lines we recommend a previous consultation. when selecting the armature, the lowest control pressure in the equipment is taken as the basis

dimensions



ball valves with double acting pneumatic actuator for liquids

connection G	nominal diameter DN[mm]	max. operating pressure [bar] to 85°C	A	B	C	D	E	L	L1	type of actuator	weight [app. kg]	type
G1/8"	10	400	50	210	192	81	164	73	43,2	PAD063	2,5	BAH1-001-SSKV-D0
G1/4"	10	400	50	210	192	81	164	73	43,2	PAD063	2,5	BAH1-002-SSKV-D0
G3/8"	10	400	50	210	192	81	164	73	43,2	PAD063	2,5	BAH1-003-SSKV-D0
G1/2"	13	400	55	214	194	81	164	85	48,2	PAD063	2,7	BAH1-004-SSKV-D0
G3/4"	20	400	70	244	217	81	164	96	62,2	PAD063	4,6	BAH1-005-SSKV-D0
G1"	24	400	75	265	236	95	210	113	66,2	PAD075	5,2	BAH1-006-SSKV-D0

ball valves with single acting pneumatic actuator for liquids

connection G	nominal diameter DN[mm]	max. operating pressure [bar]	A	B	C	D	E	L	L1	type of actuator	weight [app. kg]	type
G1/8"	10	400	50	242	224	106	241	73	43,2	PAS0855	5,6	BAH1-001-SSKV-S0
G1/4"	10	400	50	242	224	106	241	73	43,2	PAS0855	5,6	BAH1-002-SSKV-S0
G3/8"	10	400	50	242	224	106	241	73	43,2	PAS0855	5,6	BAH1-003-SSKV-S0
G1/2"	13	400	55	246	225	106	241	85	48,2	PAS0855	5,8	BAH1-004-SSKV-S0
G3/4"	20	400	70	289	262	123	275	96	62,2	PAS1005	8,9	BAH1-005-SSKV-S0
G1"	24	400	75	293	264	123	275	113	66,2	PAS1005	9,4	BAH1-006-SSKV-S0

single acting actuators are delivered normally closed (NC), if not specified in your order.

ball valves with double acting pneumatic actuator for neutral gases

connection G	nominal diameter DN[mm]	max. operating pressure [bar]	A	B	C	D	E	L	L1	type of actuator	weight [app. kg]	type
G1/8"	10	400	50	210	192	81	164	73	43,2	PAD063	2,5	BAK1-001-SSKV-D0
G1/4"	10	400	50	210	192	81	164	73	43,2	PAD063	2,5	BAK1-002-SSKV-D0
G3/8"	10	400	50	210	192	81	164	73	43,2	PAD063	2,5	BAK1-003-SSKV-D0
G1/2"	13	400	55	214	194	81	164	85	48,2	PAD063	2,7	BAK1-004-SSKV-D0
G3/4"	20	250	70	244	217	81	164	96	62,2	PAD063	4,6	BAK1-005-SSKV-D0
G1"	24	250	75	265	236	95	210	113	66,2	PAD075	5,3	BAK1-006-SSKV-D0

ball valves with single acting pneumatic actuator for neutral gases

connection G	nominal diameter DN[mm]	max. operating pressure [bar]	A	B	C	D	E	L	L1	type of actuator	weight [app. kg]	type
G1/8"	10	400	50	242	224	106	241	73	43,2	PAS0855	5,6	BAK1-001-SSKV-S0
G1/4"	10	400	50	242	224	106	241	73	43,2	PAS0855	5,6	BAK1-002-SSKV-S0
G3/8"	10	400	50	242	224	106	241	73	43,2	PAS0855	5,6	BAK1-003-SSKV-S0
G1/2"	13	400	55	246	225	106	241	85	48,2	PAS0855	5,8	BAK1-004-SSKV-S0
G3/4"	20	250	70	289	262	123	275	96	62,2	PAS1005	8,9	BAK1-005-SSKV-S0
G1"	24	250	75	293	264	123	275	113	66,2	PAS1005	9,4	BAK1-006-SSKV-S0

single acting actuators are delivered normally closed (NC), if not specified in your order.

illustrations are for information only and are non-binding
all designs, configurations, measurements and materials are subject to change without prior notice