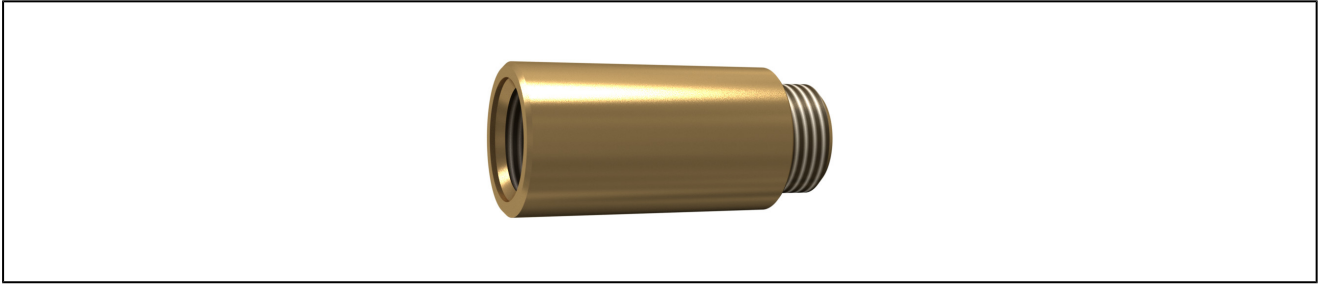
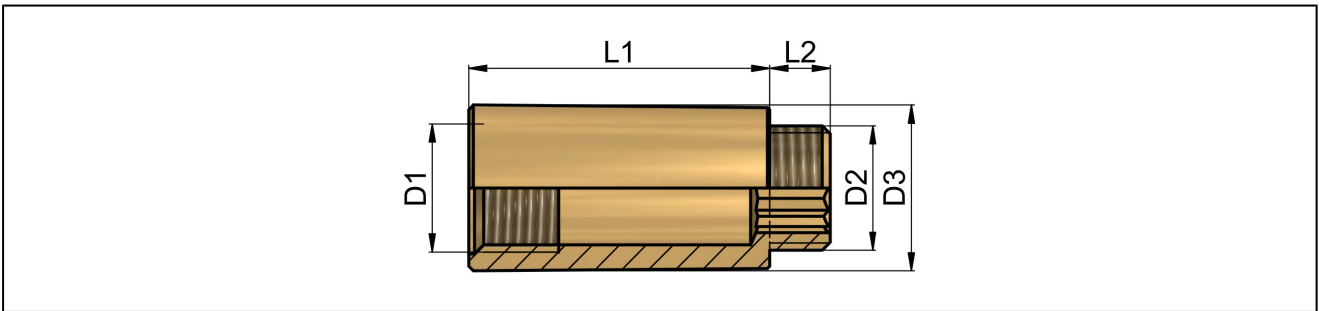


extension - brass



connection	cylindrical thread according to ISO228/1
material	brass CW617N
medium	compressed air, neutral gases, liquids which do not affect the used materials
medium temperature	-20...+200°C
operating pressure	-1...30bar

dimensions



D1	D2	D3	L1	L2	type
G1/2"	G1/2"	27,5	50	10	TH12-12-B-L50

illustrations are for information only and are non-binding
 all designs, configurations, measurements and materials are subject to change without prior notice