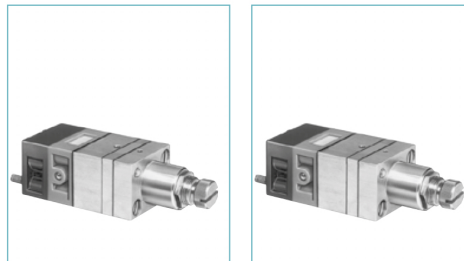


pressure switch pneumatic outlet series 815051

> 100 % pneumatic



Also available in **ATEX** version for use in potentially explosive atmospheres in accordance with 94/9/EC Directive



Part numbers (and adjustment ranges)

Adjustment range	50 → 500 mb	81 505 140	81 502 140
	0.1 → 2.5 b	81 505 150	81 502 150
	2 → 8 b	81 505 160	81 502 160
Version		Positive output	Negative output
Accuracy	50 → 500 mb	10 %	10 %
	0.1 → 2.5 b	4 %	4 %
	2 → 8 b	4 %	4 %

Symbol

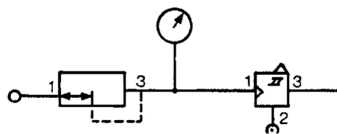


Characteristics

Orifice diameter	mm	2.5	2.5
Flow at 4 bars	NI/min	170	170
Hysteresis	50 → 500 mb	60 mb	60 mb
	0.1 → 2.5 b	100 mb	100 mb
	2 → 8 b	320 mb	320 mb
Connection - sub-base pages 54/55			
Operating temperature	°C	-5 → +50	-5 → +50
Mechanical life	operations	3 x 10 ⁶	3 x 10 ⁶
Weight	g	160	160

Connections

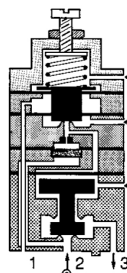
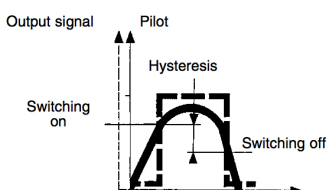
Example of pressure threshold adjustment (mini-regulator - manostat)



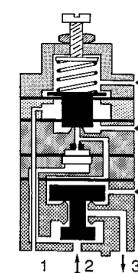
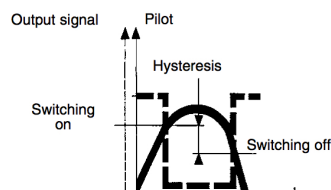
Principle of operation

The manostats provide an on or off output signal when the input signal reaches a predetermined pressure threshold.

Positive output

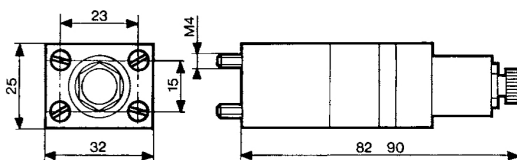


Negative output



Dimensions

81 502 140 - 81 502 150 - 81 502 160
81 505 140 - 81 505 150 - 81 505 160



Other information Pressure switches with electrical output on request.

illustrations are for information only and are non-binding
all designs, configurations, measurements and materials are subject to change without prior notice