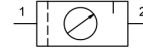


Maintenance unit 1/4" Series MU201-14



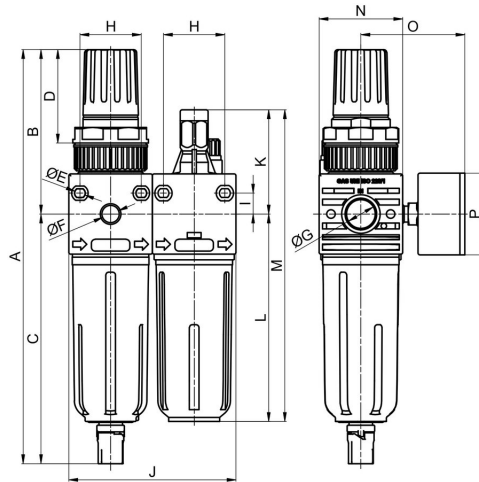
Design type	Diaphragm pressure regulator with secondary venting, Centrifugal force principle filter, Sintered filter element, Proportional lubricator, Protective cage
Connection	G1/4" according to ISO228/1
Pressure gauge connection	G1/8" according to ISO228/1
Materials	Housing Acetal resin (POM), Threaded connections Brass
Function	Pressure regulation with filtration and oil lubrication of the compressed air
Mounting type	Installation in piping system, Locknut or Wall mounting using mounting bracket
Mounting position	vertical, Condensate and oil reservoir downward
Medium	Compressed air
Medium temperature	+5...+50°C
Ambient temperature	+5...+50°C
Inlet pressure	max. 16bar, 1,5-10bar with automatic drain valve K-SA
Control ranges	see "Order code"
Flow direction	is marked by an arrow
Locking mechanism	the pressure setting can be locked by pressing in the rotary knob
Condensate drain valve	manual or semi-automatic
Reservoir volume	Filter 22cm ³ , Lubricator 42cm ³
Oil metering	1-2 drops per minute, with flow through the unit
recommended oil	after ISO VG 32, STASTO pneumatic oil HP32A
Scope of delivery	including Pressure gauge Ø40mm and Locknut
Accessories	Holding angle MMP01-14 for wall mounting, automatic Drain valve K-SA
Special version	lockable version



Order code

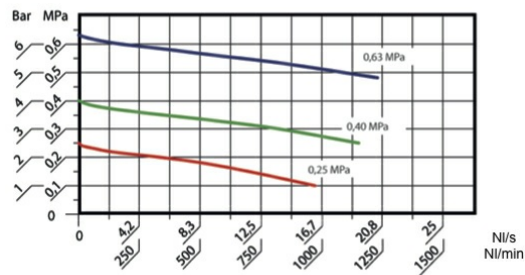
MU201 - 14 - 0,5/8 - F5 - A			
Connection	1/4"	14	
Pressure range	0,5...4bar	0,5/4	
	0,5...8bar	0,5/8	
	0,5...12bar	0,5/12	
Filter element	20µm (Leave blank)		
	5µm	F5	
Drain valve	semi-automatic drain valve (Leave blank)		
	automatic drain valve	A	

Dimensions



Connection G	A	B	C	D	E	F	H	I	J	K	L	M	N	O	P	Weight [approx. kg]	Type
G1/4"	208	82,5	125,5	47	4,5	G1/8"	30÷32	10,5	84	52,5	104	156,5	42	~52	40	0,46	MU201-14-0,5/8

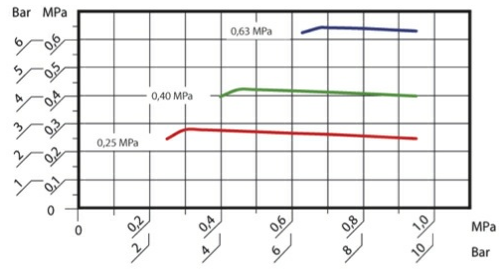
Flow diagram



Inlet pressure = 10bar

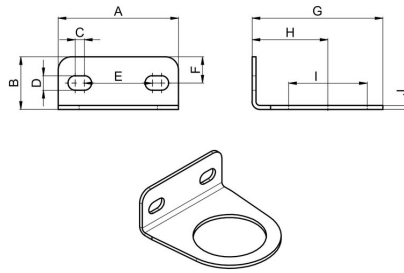


Control characteristic



Constant flow rate = 34Nl/min
horizontal axis: Inlet pressure
vertical axis: Outlet pressure

Accessories



A	B	C	D	E	F	G	H	I	J	Type
46	20	3,5	5,5	26	10	50	29	30	1,5	MMP01-14

Illustrations non-binding

Design, dimensional and material changes reserved

Pneumatics / Regulators, filters and lubricators / Maintenance devices - series FRL / Maintenance unit Series MU201/FRL / [MU201-14-0,5/8] Maintenance unit 1/4"-980-16

