

## Straight male connector Series C-GE-UNF



Basic body with nut and cutting ring



B4-Cutting ring

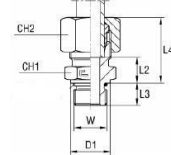
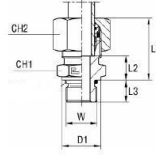
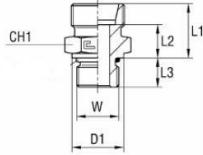


B3-Cutting ring

Design type	Compression fitting with cutting ring, with B3 or B4 cutting ring
Male thread	7/16...17/8", with elastic seal
Tube outside diameter	6...42mm
Material	Galvanized steel
according to standard	EN ISO 8434-1 (DIN 2353)
Medium	neutral liquids and gases that do not attack the materials used
Medium temperature	B3-Cutting ring -35...+100°C B4-Cutting ring NBR -35...+100°C (FKM on request)
Operating pressure	Nominal pressure according to table



## Dimensions



Main body

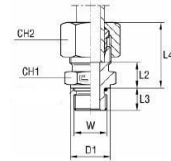
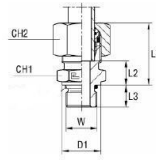
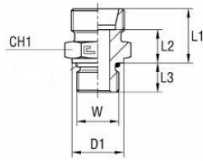
with B4 cutting ring

with B3 cutting ring

Series	PN [bar]	Tube diameter	W	D1	L1	L2	L3	L4	CH1	CH2	Type Main body	Type with B4 ring	Type with B3 ring
L	315	6	7/16-20	13,8	16,9	9,9	9,1	24,5	14	14	C-GE06L7/16UNFX	C-GE06ZL7/16UNF	C-GE06L7/16UNF
		8	1/2-20	16,8	16,9	9,9	9,1	25	17	17	C-GE08L1/2UNFX	C-GE08ZL1/2UNF	C-GE08L1/2UNF
		10	1/2-20	16,8	17,9	10,9	9,1	26	17	19	C-GE10L1/2UNFX	C-GE10ZL1/2UNF	C-GE10L1/2UNF
		12	9/16-18	18,8	18	11	10	25,5	19	22	C-GE12L9/16UNFX	C-GE12ZL9/16UNF	C-GE12L9/16UNF
		15	3/4-16	21,8	20,9	13,9	11,1	29	24	27	C-GE15L3/4UNFX	C-GE15ZL3/4UNF	C-GE15L3/4UNF
		18	3/4-16	21,8	21,9	14,4	11,1	31	27	32	C-GE18L3/4UNFX	C-GE18ZL3/4UNF	C-GE18L3/4UNF
	160	22	11/16-12	31,8	23,9	16,4	15,1	33	32	36	C-GE22L11/16UNFX	C-GE22ZL11/16UNF	C-GE22L11/16UNF
		28	15/16-12	40,8	24,9	17,4	15,1	34	41	41	C-GE28L15/16UNFX	C-GE28ZL15/16UNF	C-GE28L15/16UNF
		35	15/8-12	49,8	27,9	17,4	15,1	39	50	50	C-GE35L15/8UNFX	C-GE35ZL15/8UNF	C-GE35L15/8UNF
		42	17/8-12	54,8	29,9	18,9	15,1	42	55	60	C-GE42L17/8UNFX	C-GE42ZL17/8UNF	C-GE42L17/8UNF
S	630	6	1/2-20	16,8	21,9	14,9	9,1	30	17	17	C-GE06S1/2UNFX	C-GE06ZS1/2UNF	C-GE06S1/2UNF
		8	1/2-20	16,8	21,9	14,9	9,1	30	17	19	C-GE08S1/2UNFX	C-GE08ZS1/2UNF	C-GE08S1/2UNF
		10	9/16-18	18,8	22	14,5	10	30,5	19	22	C-GE10S9/16UNFX	C-GE10ZS9/16UNF	C-GE10S9/16UNF
		12	9/16-18	18,8	22	14,5	10	30,5	22	24	C-GE12S9/16UNFX	C-GE12ZS9/16UNF	C-GE12S9/16UNF
		14	3/4-16	21,8	23,9	15,9	11,1	34	24	27	C-GE14S3/4UNFX	C-GE14ZS3/4UNF	C-GE14S3/4UNF
	400	16	3/4-16	21,8	23,9	15,4	11,1	34	27	30	C-GE16S3/4UNFX	C-GE16ZS3/4UNF	C-GE16S3/4UNF
		20	11/16-12	31,8	30,9	20,4	15,1	42	32	36	C-GE20S11/16UNFX	C-GE20ZS11/16UNF	C-GE20S11/16UNF
		25	15/16-12	40,8	34,9	22,9	15,1	47	41	46	C-GE25S15/16UNFX	C-GE25ZS15/16UNF	C-GE25S15/16UNF
		30	15/8-12	49,8	36,9	23,4	15,1	50	50	50	C-GE30S15/8UNFX	C-GE30ZS15/8UNF	C-GE30S15/8UNF
	315	38	17/8-12	54,8	41,9	25,9	15,1	57	55	60	C-GE38S17/8UNFX	C-GE38ZS17/8UNF	C-GE38S17/8UNF



## Dimensions



Main body

with B4 cutting ring

with B3 cutting ring

Series	PN [bar]	Tube diameter	W	D1	L1	L2	L3	L4	CH1	CH2	Type Main body	Type with B4 ring	Type with B3 ring
L	315	8	7/16-20	13,8	16,9	9,9	9,1	25	14	17	C-GE08L7/16UNFX	C-GE08ZL7/16UNF	C-GE08L7/16UNF
		10	7/16-20	13,8	17,9	10,9	9,1	26	17	19	C-GE10L7/16UNFX	C-GE10ZL7/16UNF	C-GE10L7/16UNF
		12	3/4-16	21,8	19,9	12,9	11,1	27,5	22	22	C-GE12L3/4UNFX	C-GE12ZL3/4UNF	C-GE12L3/4UNF
		12	7/8-14	26,8	21,3	14,3	12,7	29	27	22	C-GE12L7/8UNFX	C-GE12ZL7/8UNF	C-GE12L7/8UNF
		18	7/8-14	26,8	22,3	14,8	12,7	31,5	27	32	C-GE18L7/8UNFX	C-GE18ZL7/8UNF	C-GE18L7/8UNF
	160	22	7/8-14	26,8	24,3	16,8	12,7	33,5	32	36	C-GE22L7/8UNFX	C-GE22ZL7/8UNF	C-GE22L7/8UNF
		22	15/16-12	40,8	24,9	17,4	15,1	34	41	36	C-GE22L15/16UNFX	C-GE22ZL15/16UNF	C-GE22L15/16UNF
		28	11/16-12	31,8	24,9	17,4	15,1	34	41	41	C-GE28L11/16UNFX	C-GE28ZL11/16UNF	C-GE28L11/16UNF
		35	15/16-12	40,8	27,9	17,4	15,1	39	46	50	C-GE35L15/16UNFX	C-GE35ZL15/16UNF	C-GE35L15/16UNF
		42	15/8-12	49,8	29,9	18,9	15,1	42	55	60	C-GE42L15/8UNFX	C-GE42ZL15/8UNF	C-GE42L15/8UNF
S	630	8	7/16-20	13,8	21,9	14,9	9,1	30	17	19	C-GE08L7/16UNFX	C-GE08ZL7/16UNF	C-GE08L7/16UNF
		12	3/4-16	21,8	24,9	17,4	11,1	33,5	22	24	C-GE12L3/4UNFX	C-GE12ZL3/4UNF	C-GE12L3/4UNF
	400	16	7/8-14	26,8	27,3	18,8	12,7	37,5	27	30	C-GE16L7/8UNFX	C-GE16ZL7/8UNF	C-GE16L7/8UNF
		20	3/4-16	21,8	30,9	20,4	11,1	42	32	36	C-GE20L3/4UNFX	C-GE20ZL3/4UNF	C-GE20L3/4UNF
		20	7/8-14	26,8	31,3	20,8	12,7	42,5	32	36	C-GE20L7/8UNFX	C-GE20ZL7/8UNF	C-GE20L7/8UNF
		25	11/16-12	31,8	34,9	22,9	15,1	47	36	46	C-GE25L11/16UNFX	C-GE25ZL11/16UNF	C-GE25L11/16UNF
		30	15/16-12	40,8	36,9	23,4	15,1	50	46	50	C-GE30L15/16UNFX	C-GE30ZL15/16UNF	C-GE30L15/16UNF
	315	38	15/8-12	49,8	41,9	25,9	15,1	57	55	60	C-GE38L15/8UNFX	C-GE38ZL15/8UNF	C-GE38L15/8UNF

Illustrations non-binding

Design, dimensional and material changes reserved

Pneumatics / Fittings and couplings / Tube fittings / Tube fittings - Zinc plated steel ISO 8434-1 (DIN 2353) / Straight male stud fitting Series C-GE-UNF

