

## time function element series PC007

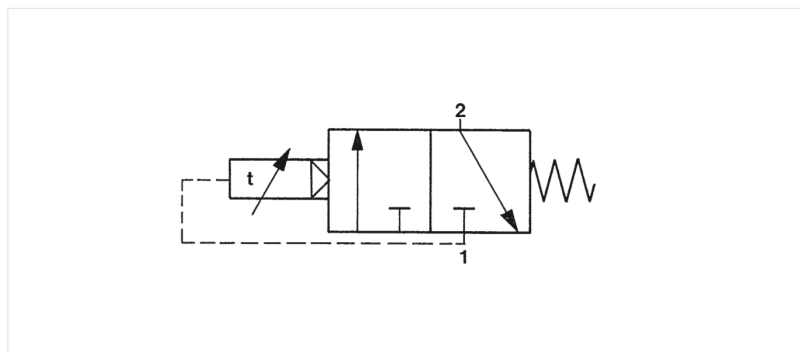


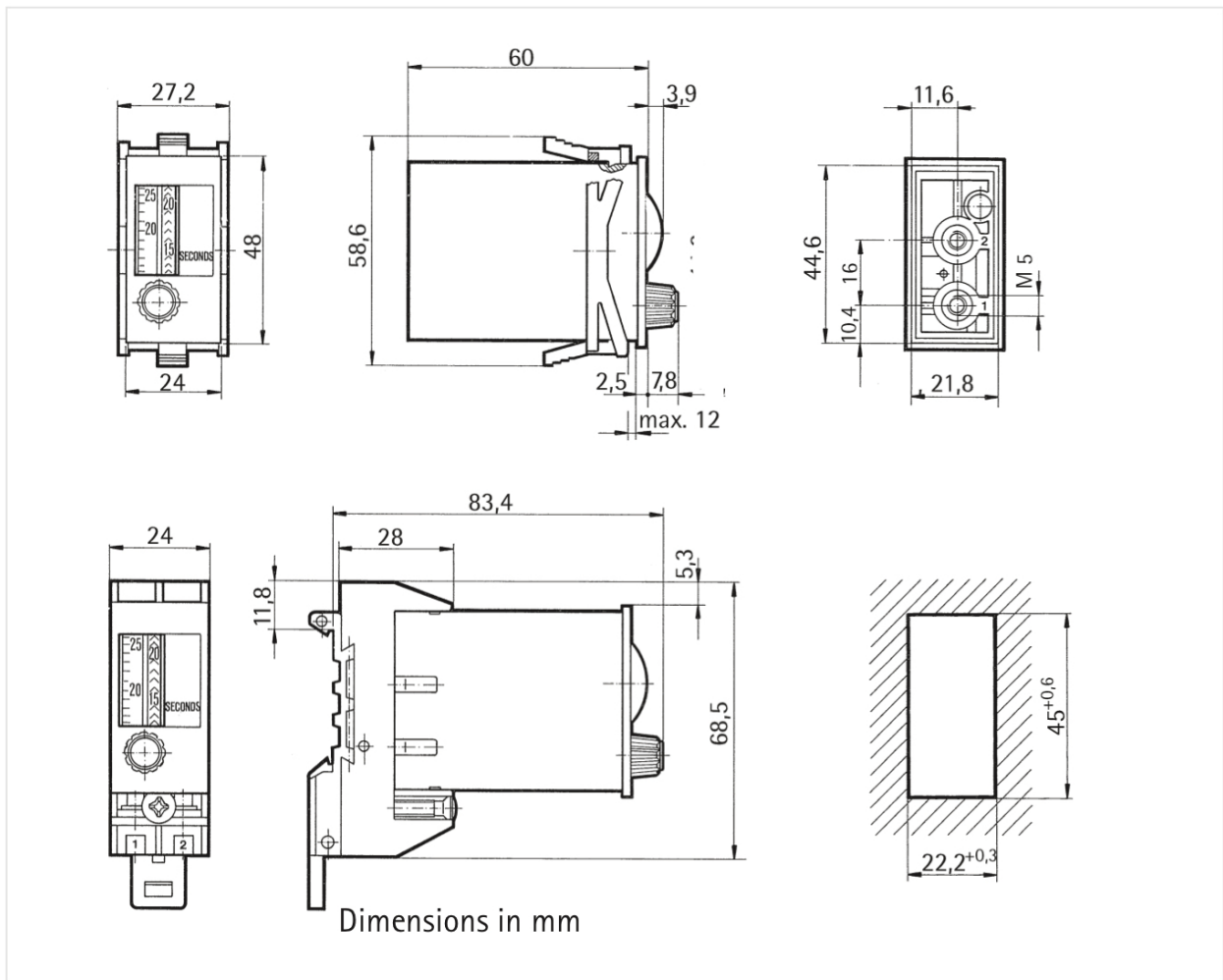
### TECHNICAL DATA

- Low-cost
- DIN dimensions
- Requires little space for installation
- Pressure-independent
- No continuous air supply required
- Stationary preset value

Display	digit roll
Time range	0.2 ... 3 s, 2 ... 30 s or 20 ... 300 s, depending on version
Operating pressure	2 ... 6 bar
Air quality	oilfree
Filter pore width	< 40 µs
Operating temperature	0 ... + 60 °C
Connection	hose coupler M5 or rapid-fit connection, depending on version
Mounting	clamping spring or DIN rail attachment
Protection class (IEC 144)	IP 40
Weight	approx. 50 g
Input	timer is started when input 1 is pressurized
Time setting	continuous with rotary knob
Timing range	0.2-3 s    2-30 s    8-120 s    20-300 s
Repeating accuracy	± 0.1 s    ± 0.3 s    ± 1.2 s    ± 3.0 s
Setting accuracy	± 0.3 s    ± 0.6 s    ± 3.0 s    ± 6.0 s
Reset	by blocking air intake at input 1
Reset time	min. 200 ms
Output	after the set time has elapsed, input 1 is connected to output 2

### CONNECTION DIAGRAM





illustrations are non-binding  
 all designs, configurations, measurements and materials are subject to change without prior notice