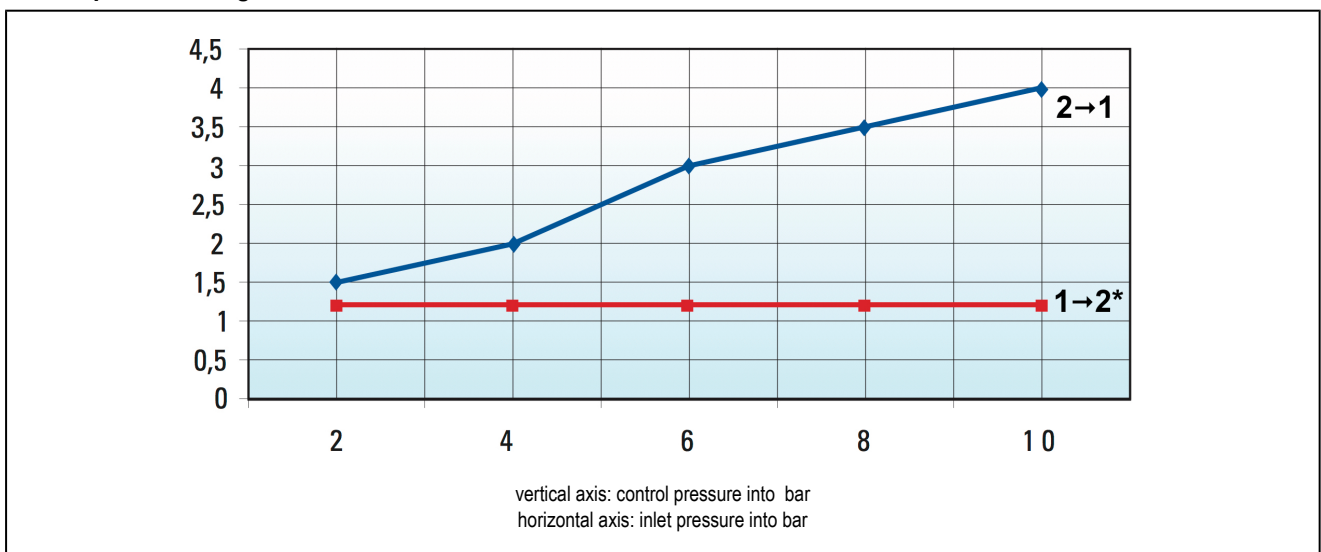


## bidirectional stop valve series MV45



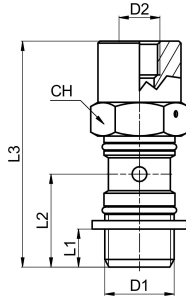
design	bidirectional stop valve, pneumatically pilot operated, optionally with push-in, screwed or internal threaded banjo
material	body nickel plated brass, piston stainless steel, spring made of stainless steel, seals NBR-PU, gasket polyamide (PA)
function	U: open passage in one direction, flow prevention in the opposite direction, at pneumatic signal you have free passage in both directions B: sealed in both directions, at pneumatic signal you have free passage in both directions
threaded connections	G1/8"...G1/2" according to ISO228/1
outside diameter of hose	6mm, 8mm, 10mm and 12mm
recommended materials	polyamide (PA), polyurethane (PU/CP), polyethylene (PE), PTFE (PT)
hose tolerance	+/-0,05mm until diameter 10mm, +/-0,1mm from diameter 12mm
mounting position	any
medium	compressed air, neutral gases
medium temperature	-5...+70°C
operating pressure	2...10bar

### control pressure diagram



\*only for series MV45...-B

### dimensions without banjo

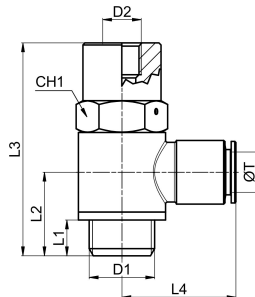


D1	D2	L1	L2	L3	flow rate [Nl/min]	CH	weight [g]	type
G1/8"	M5	6	15,5	42	170	13	24	MV45-00-18-U
G1/4"	M5	8	18,5	47	345	17	47	MV45-00-14-U
G3/8"	G1/8"	9	21	53,5	700	20	78	MV45-00-38-U
G1/2"	G1/8"	10	24,5	60	1050	25	139	MV45-00-12-U

D1	D2	L1	L2	L3	flow rate [Nl/min]	CH	weight [g]	type
G1/8"	M5	6	15,5	42	440	13	24	MV45-00-18-B
G1/4"	M5	8	18,5	47	660	17	47	MV45-00-14-B
G3/8"	G1/8"	9	21	53,5	965	20	78	MV45-00-38-B
G1/2"	G1/8"	10	24,5	60	1450	25	139	MV45-00-12-B

\*flow rate at input pressure of 6bar and 1bar pressure drop

### dimensions with push-in fitting-banjo

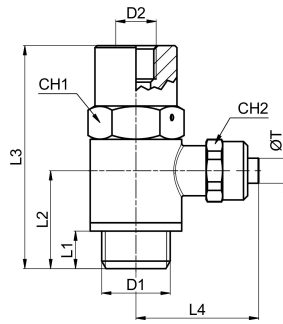


D1	D2	ØT outside diameter of hose	L1	L2	L3	L4	flow rate [Nl/min]	CH1	weight [g]	type
G1/8"	M5	6	6	15,5	42	22,5	170	13	40	MV45MA35-06-18-U
G1/4"	M5	6	8	18,5	47	24	345	17	69	MV45MA35-06-14-U
G1/4"	M5	8	8	18,5	47	24,5	345	17	70	MV45MA35-08-14-U
G3/8"	G1/8"	8	9	21	53,5	26,5	700	20	116	MV45MA35-08-38-U
G3/8"	G1/8"	10	9	21	53,5	29	700	20	117	MV45MA35-10-38-U
G1/2"	G1/8"	12	10	24,5	60	31,5	1050	25	196	MV45MA35-12-12-U

D1	D2	ØT outside diameter of hose	L1	L2	L3	L4	flow rate [Nl/min]	CH1	weight [g]	type
G1/8"	M5	6	6	15,5	42	22,5	440	13	40	MV45MA35-06-18-B
G1/4"	M5	6	8	18,5	47	24	660	17	69	MV45MA35-06-14-B
G1/4"	M5	8	8	18,5	47	24,5	660	17	70	MV45MA35-08-14-B
G3/8"	G1/8"	8	9	21	53,5	26,5	965	20	116	MV45MA35-08-38-B
G3/8"	G1/8"	10	9	21	53,5	29	965	20	117	MV45MA35-10-38-B
G1/2"	G1/8"	12	10	24,5	60	31,5	1450	25	196	MV45MA35-12-12-B

\*flow rate at input pressure of 6bar and 1bar pressure drop

## dimensions with screw fitting-banjo



D1	D2	diameter of hose ØT D/d [mm]	L1	L2	L3	L4	flow rate [Nl/min]	CH1	CH2	weight [g]	type
G1/8"	M5	6/4	6	15,5	42	25	170	13	12	43	MV45MC23-06-18-U
G1/4"	M5	6/4	8	18,5	47	26,5	345	17	12	72	MV45MC23-06-14-U
G1/4"	M5	8/6	8	18,5	47	27,5	345	17	14	74	MV45MC23-08-14-U
G3/8"	G1/8"	8/6	9	21	53,5	29,5	700	20	14	117	MV45MC23-08-38-U
G3/8"	G1/8"	10/8	9	21	53,5	30,5	700	20	16	119	MV45MC23-10-38-U

\*flow rate at input pressure of 6bar and 1bar pressure drop

D1	D2	diameter of hose ØT D/d [mm]	L1	L2	L3	L4	flow rate [Nl/min]	CH1	CH2	weight [g]	type
G1/8"	M5	6/4	6	15,5	42	25	440	13	12	43	MV45MC23-06-18-B
G1/4"	M5	6/4	8	18,5	47	26,5	660	17	12	72	MV45MC23-06-14-B
G1/4"	M5	8/6	8	18,5	47	27,5	660	17	14	74	MV45MC23-08-14-B
G3/8"	G1/8"	8/6	9	21	53,5	29,5	965	20	14	117	MV45MC23-08-38-B
G3/8"	G1/8"	10/8	9	21	53,5	30,5	965	20	16	119	MV45MC23-10-38-B

\*flow rate at input pressure of 6bar and 1bar pressure drop

## dimensions with banjo with female thread



D1	D2	D3	L1	L2	L3	L4	flow rate [Nl/min]	CH1	weight [g]	type
G1/8"	M5	G1/8"	6	15,5	42	18	170	13	39	MV45RA042-18-18-U
G1/4"	M5	G1/4"	8	18,5	47	22	345	17	72	MV45RA042-14-14-U
G3/8"	G1/8"	G3/8"	9	21	53,5	26	700	20	118	MV45RA042-38-38-U
G1/2"	G1/8"	G1/2"	10	24,5	60	32	1050	25	205	MV45RA042-12-12-U

D1	D2	D3	L1	L2	L3	L4	flow rate [Nl/min]	CH1	weight [g]	type
G1/8"	M5	G1/8"	6	15,5	42	18	440	13	39	MV45RA042-18-18-B
G1/4"	M5	G1/4"	8	18,5	47	22	660	17	72	MV45RA042-14-14-B
G3/8"	G1/8"	G3/8"	9	21	53,5	26	965	20	118	MV45RA042-38-38-B
G1/2"	G1/8"	G1/2"	10	24,5	60	32	1450	25	205	MV45RA042-12-12-B

\*flow rate at input pressure of 6bar and 1bar pressure drop

illustrations are non-binding  
all designs, configurations, measurements and materials are subject to change without prior notice