

TECHNICAL SPECIFICATIONS

Type of control	Pilot operated, pressure difference is required
Design	Diaphragm design
Connection	Flanged acc. to EN 1092-1 Form B1/B2 Further flanges like ASME on request
Installation	Preferable with actuator upright
Pressure	0,3 - 20 bar (see table on page 2)
Medium	Clean, neutral, gaseous and liquid media
Viscosity	22 mm ² /s
Temperature range	Medium: -10 °C up to +80 °C Ambient: -10 °C up to +50 °C
Body material	Cast iron EN-GJL-250 Cast steel GP240 GH Stainless steel 1.4581
Metallic inner parts	Brass and Stainless steel
Sealing	NBR, FKM, EPDM
Supply voltage	AC~ 24V, 110V, 230V DC= 12V, 24V Other supply voltages on request
Voltage tolerance	-10% / +10%
Protection class	IP65 acc. to DIN 60529
Duty factor	100% ED-VDE 0580
Connection type	Plug / Cable
Ex-proof	acc. to 2014/34/EG(ATEX) Further Ex-proof on request

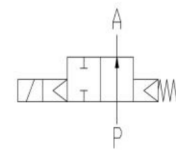
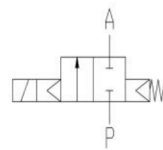
VALVE FEATURES

- Pressure difference is required
- High life time
- Simple compact valve design
- High-quality materials
- Reliable and sturdy sealing elements
- Long-term availability of spare parts

FUNCTION

NC – non energized closed

NO – non-energized open



CERTIFICATES

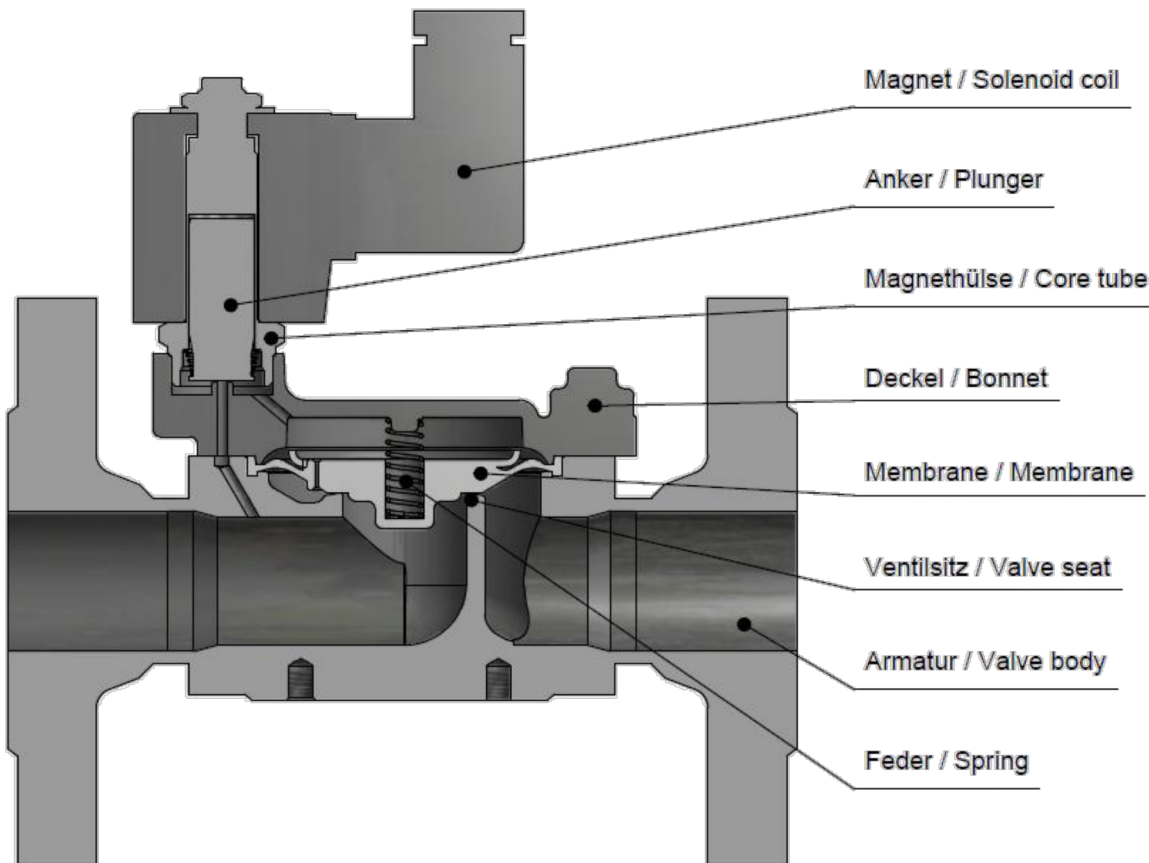


2/2-way solenoid valve - pilot-operated
series SL108/SL109

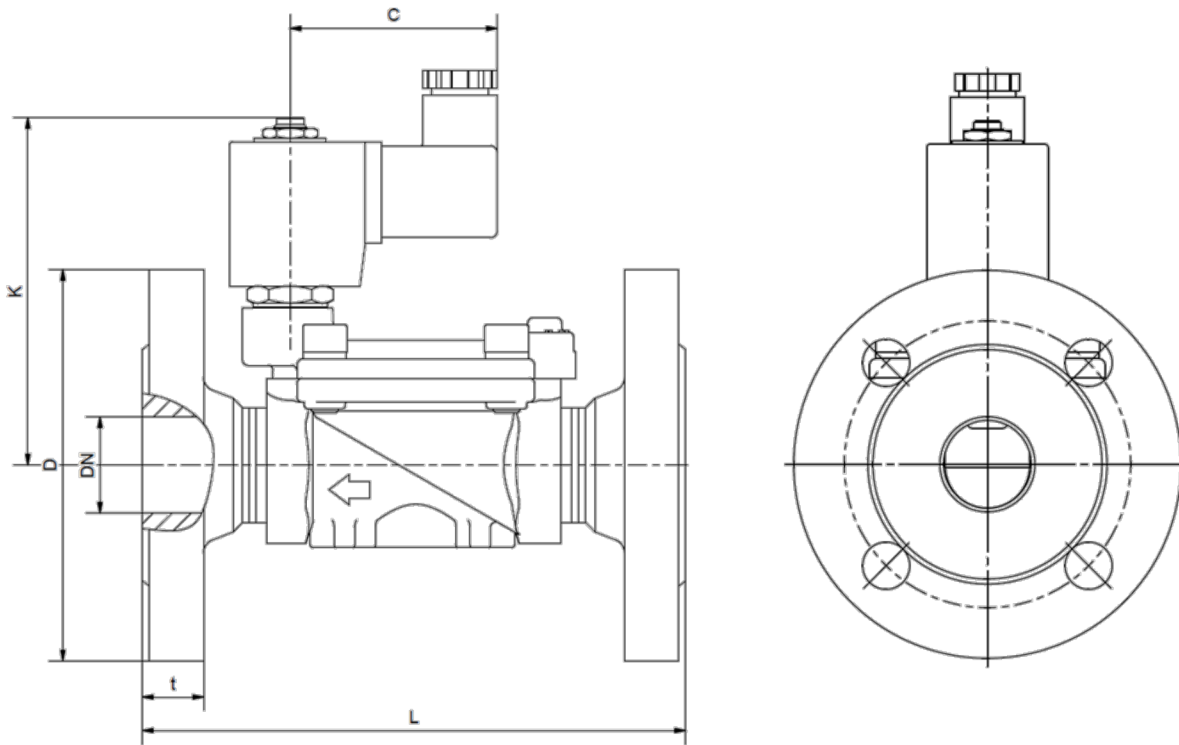
DN	Seat Ø mm	Kv-value m ³ /h	max. pressure			max. pressure ATEX		
15	15	3,9	0,3-16	0,3-20	0,3-20	0,3-10	0,3-20	0,3-16
20	20	10,8	0,3-16	0,3-20	0,3-20	0,3-10	0,3-20	0,3-16
25	25	13,0	0,3-16	0,3-20	0,3-20	0,3-10	0,3-20	0,3-16
32	32	30,0	-	0,5-16	0,5-16	-	0,5-16	0,5-13
40	40	32,0	-	0,5-16	0,5-16	-	0,5-16	0,5-13
50	50	45,0	-	0,5-16	0,5-16	-	0,5-16	0,5-13

The flow rate mentioned in the table applies to the strongest coil.

Pressure rating for EN-GJL-250 max. 16 bar.



DIMENSIONS



DN	15	20	25	32	40	50
C	61	61	61	61	61	61
K	97	105	105	120	120	135
L	130	150	160	180	200	230
t	16	18	18	18	18	20
kg	2,3	3,3	3,8	6,5	7,0	9,5

*Differing dimension "C" for ATEX-coils