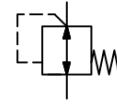


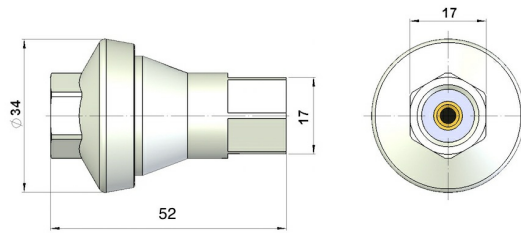
Pressure regulator Series PR29



Design type	Diaphragm pressure regulator, Pressure fixed set, without secondary exhaust venting
Function	Secondary pressure regulation Since the pressure is factory-set, this pressure regulator is tamper-proof. The correct pressure at the point of use increases service life and reduces energy costs.
Connection	G1/4" according to ISO228/1
Materials	Housing Zinc, Internal parts Stainless steel/Brass, Diaphragm NBR
Medium	filtered compressed air
Medium temperature	0...+60°C
Ambient temperature	0...+60°C
Inlet pressure	max. 18bar
Regulated pressure	see table
Tolerance Regulated pressure	1...3bar +/- 0,3bar, 4...7bar +/- 10%
Flow direction	is marked by an arrow
Mounting type	Installation in piping system
Mounting position	any
Approval	ATEX
Special versions	NPT thread



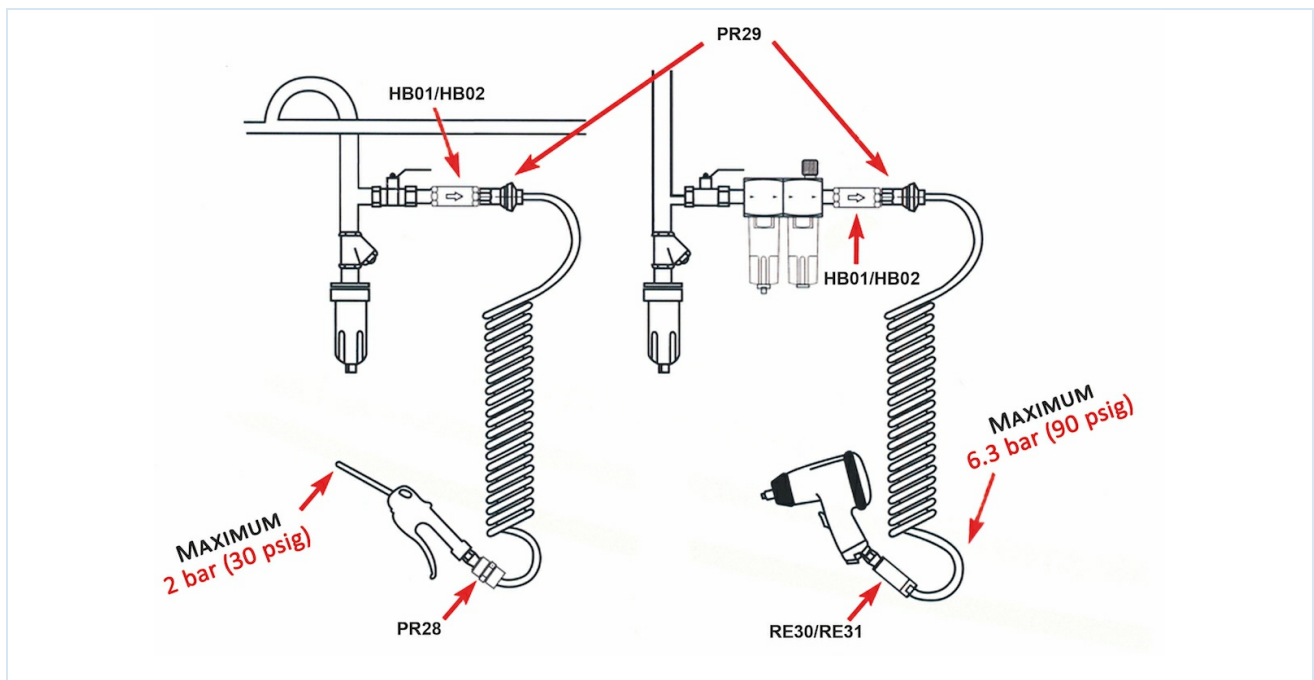
Dimensional drawing



Connection	Regulated pressure [bar]	Flow rate* [Nl/min]	Weight [g]	Type
G1/4"	1	400	80	PR29-14-1
G1/4"	2	600	80	PR29-14-2
G1/4"	3	700	80	PR29-14-3
G1/4"	4	700	80	PR29-14-4
G1/4"	5	700	80	PR29-14-5
G1/4"	6	800	80	PR29-14-6
G1/4"	6,5	800	80	PR29-14-6,5
G1/4"	7	800	80	PR29-14-7

*Flow rate at inlet pressure 12 bar and 0.5 bar pressure drop

Application example



Illustrations non-binding
Design, dimensional and material changes reserved

Pneumatics / Regulators, filters and lubricators / Special pressure regulators / Pressure regulator fixed set Series PR29

Version 4

139253 / Generated 2026/23 EN

+43 512 52076
austria@stasto.eu
© STASTO Automation KG

www.stasto.com
Open series online
Page 2 / 2

