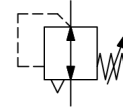


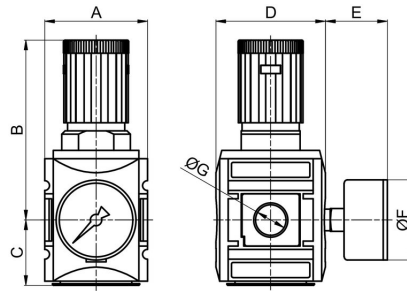
Pressure regulator G1/4" ... G1" Series RE18



Design type	Diaphragm pressure regulator with secondary venting, Handwheel lockable
Connection	G1/4" ... G1" according to ISO228/1
Materials	Housing and Pressure gauge connection Glass-fiber reinforced polyamide, Pressure ports Zinc die casting, Internal parts made of brass, Seals NBR, Spring cap POM
Function	Secondary pressure regulation
Locking mechanism	Pressure setting can be locked by pressing in the rotary knob
Mounting type	Installation in piping system or Wall mounting using mounting bracket
Mounting position	any
Medium	filtered compressed air
Medium temperature	0...+50°C
Ambient temperature	0...+50°C
Inlet pressure	maximum 16bar
Control ranges	0,1...1bar, 0,1...2bar, 0,2...4bar, 0,5...8bar, 0,5...10bar and 0,5...16bar
Flow direction	is marked by an arrow
Scope of delivery	including pressure gauge, without padlock VS36



Dimensional drawing



Connection G	Flow rate at 6 bar* [Nl/min]	A	B	C	D	E	F	Weight [approx. kg]
G1/4	2200	52	96	33	54	~38	50	0,4
G3/8	2600	52	96	33	54	~38	50	0,4
G3/8	4300	63	110	40	67	~38	50	0,6
G1/2"	5200	63	110	40	67	~38	50	0,6
G3/4"	14000	85	137	54	93	~38	63	1,1
G1"	14000	85	137	54	93	~38	63	1

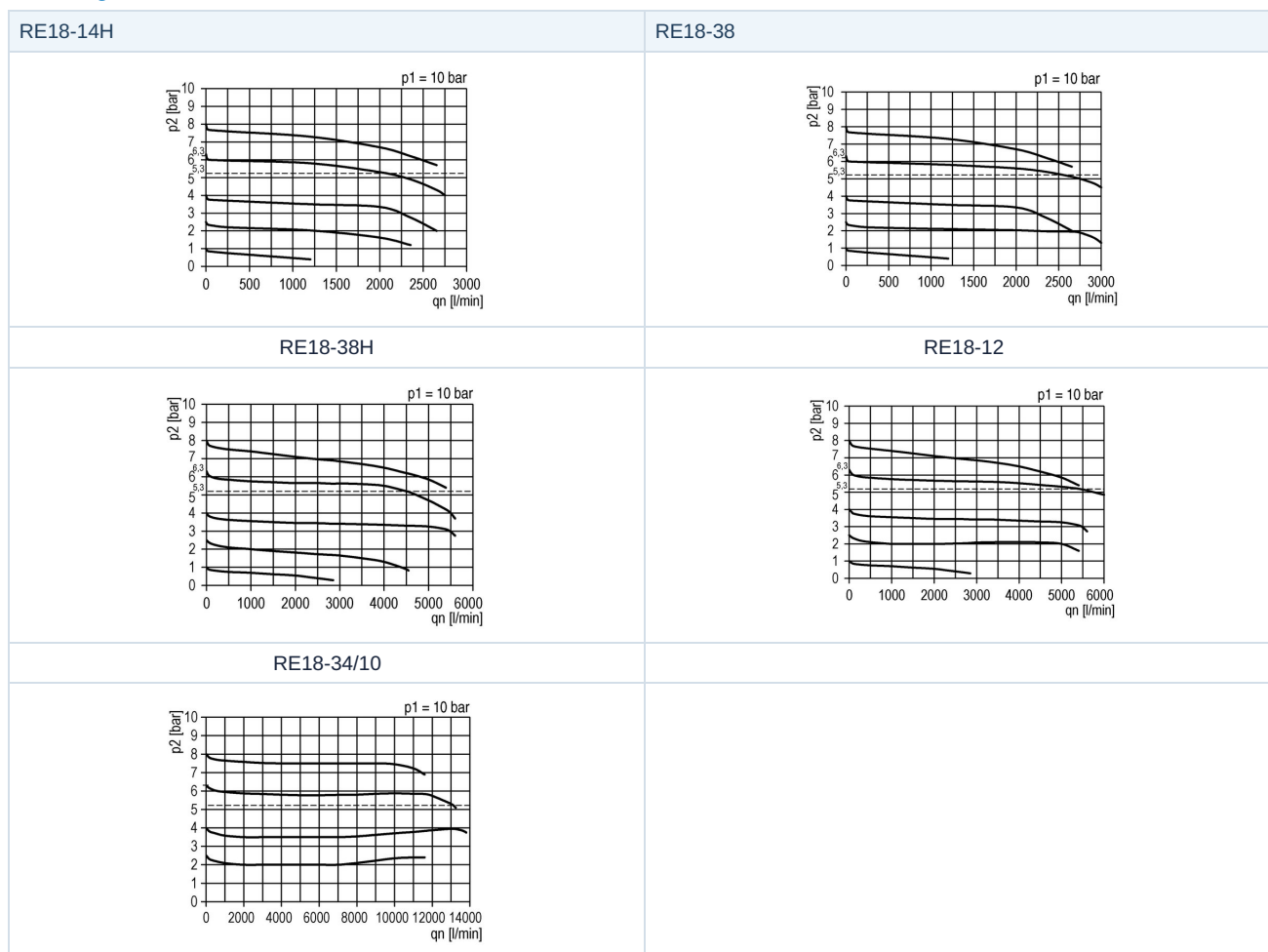
Connection	Flow rate at 6 bar* [Nl/min]	Pressure range [bar]	Type
G1/4"	2200	0,1...1	RE18-14H-0,1/1-MA
G1/4"	2200	0,1...2	RE18-14H-0,1/2-MA
G1/4"	2200	0,2...4	RE18-14H-0,2/4-MA
G1/4"	2200	0,5...8	RE18-14H-0,5/8-MA
G1/4"	2200	0,5...10	RE18-14H-0,5/10-MA
G1/4"	2200	0,5...16	RE18-14H-0,5/16-MA
G3/8"	2600	0,1...1	RE18-38-0,1/1-MA
G3/8"	2600	0,1...2	RE18-38-0,1/2-MA
G3/8"	2600	0,2...4	RE18-38-0,2/4-MA
G3/8"	2600	0,5...8	RE18-38-0,5/8-MA
G3/8"	2600	0,5...10	RE18-38-0,5/10-MA
G3/8"	2600	0,5...16	RE18-38-0,5/16-MA
G3/8"	4600	0,1...1	RE18-38H-0,1/1-MA
G3/8"	4600	0,1...2	RE18-38H-0,1/2-MA
G3/8"	4600	0,2...4	RE18-38H-0,2/4-MA
G3/8"	4600	0,5...8	RE18-38H-0,5/8-MA
G3/8"	4600	0,5...10	RE18-38H-0,5/10-MA
G3/8"	4600	0,5...16	RE18-38H-0,5/16-MA
G1/2"	5100	0,1...1	RE18-12-0,1/1-MA
G1/2"	5100	0,1...2	RE18-12-0,1/2-MA
G1/2"	5100	0,2...4	RE18-12-0,2/4-MA
G1/2"	5100	0,5...8	RE18-12-0,5/8-MA
G1/2"	5100	0,5...10	RE18-12-0,5/10-MA
G1/2"	5100	0,5...16	RE18-12-0,5/16-MA
G3/4"	14000	0,1...1	RE18-34-0,1/1-MA
G3/4"	14000	0,1...2	RE18-34-0,1/2-MA
G3/4"	14000	0,2...4	RE18-34-0,2/4-MA
G3/4"	14000	0,5...8	RE18-34-0,5/8-MA
G3/4"	14000	0,5...10	RE18-34-0,5/10-MA
G3/4"	14000	0,5...16	RE18-34-0,5/16-MA
G1"	14000	0,1...1	RE18-10-0,1/1-MA



G1"	14000	0,1...2	RE18-10-0,1/2-MA
G1"	14000	0,2...4	RE18-10-0,2/4-MA
G1"	14000	0,5...8	RE18-10-0,5/8-MA
G1"	14000	0,5...10	RE18-10-0,5/10-MA
G1"	14000	0,5...16	RE18-10-0,5/16-MA

*Flow rates at an inlet pressure of 10 bar, an outlet pressure of 6 bar and a pressure drop of 1 bar

Flow diagrams



Accessories

Designation	Type
Mounting nut M36x1,5 for G1/4" and G3/8" (Type RE18-38)	MPN18-14H/38
Mounting nut M42x1,5 for G3/8" (Type RE18-38H) and G1/2"	MPN18-38H/12
Mounting nut M50x1,5 for G3/4" and G1"	MPN18-34/10
Mounting bracket for G1/4" and G3/8" (Type RE18-38)	MMP18-14H/38
Mounting bracket for G3/8" (Type RE18-38H) and G1/2"	MMP18-38H/12
Mounting bracket kit for G1/4" and G3/8" (Type RE18-38)	MMB18-14H/38
Mounting bracket kit for G3/8" (Type RE18-38H) and G1/2"	MMB18-38H/12
Mounting bracket kit for G3/4" and G1"	MMB18-34/10

Illustrations non-binding

Design, dimensional and material changes reserved

Pneumatics / Regulators, filters and lubricators / Maintenance devices - series 18 / Pressure regulator Series RE18

Version 5

139232 / Generated 2026/23 EN

MADE IN EUROPE

+43 512 52076
austria@stasto.eu
© STASTO Automation KG

www.stasto.com

Open series online

Page 3 / 3

