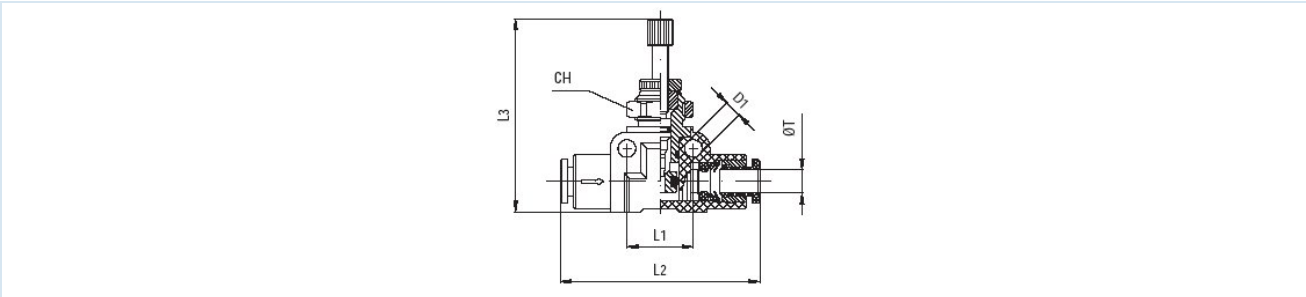


Throttle check valve with shut-off function Series MV34U



Design type	Needle valve, with push-in connection on both sides for tubing
Material	Body Polyoxymethylene (POM), Throttle valve Nickel-plated brass, Seals NBR
Function	Flow control in one direction, free flow in the opposite direction, Actuation with knurled screw and locking by the hex nut
Hose outside diameter	4mm, 6mm and 8mm
recommended materials	Polyamide (PA), Polyurethane (PU/CP), Polyethylene (PE), PTFE (PT)
Hose tolerances	+/-0,07mm
Mounting type	Installation in piping system, Panel mounting or Wall mounting via drilled holes in the valve body
Mounting position	any
Medium	Compressed air, neutral gases
Medium temperature	-20....+70°C
Operating pressure	0...10bar

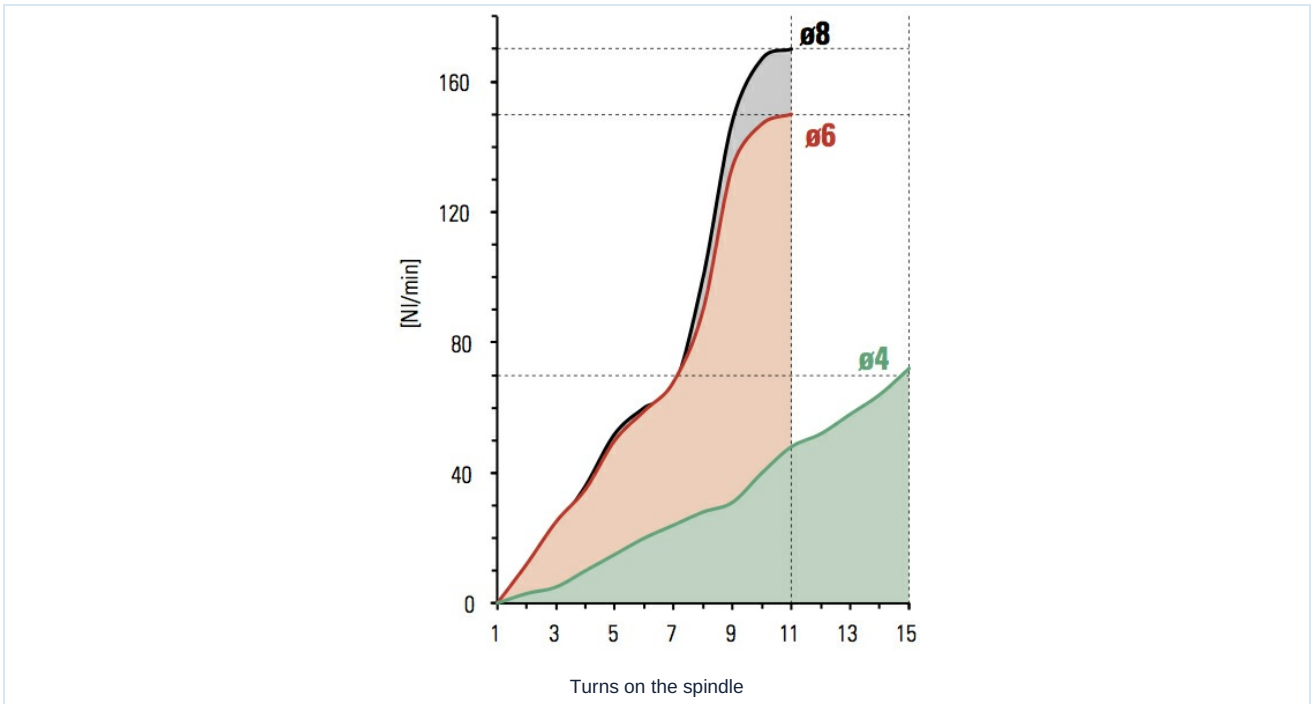
Dimensions



ØT	D1	L1	L2	L3max.	CH	Weight [g]	Type
4	3,2	13	36	35	11	14	MV34-04-U
6	3,2	16	45	45	14	26	MV34-06-U
8	3,2	16	46	46	14	28	MV34-08-U



Flow diagram - Flow rate at inlet pressure 6 bar and 1 bar pressure drop



Illustrations non-binding
Design, dimensional and material changes reserved

Pneumatics / Flow control valves / Unidirectional flow control valves / Unidirectional flow control valve Series MV34-U

