

## maintenance unit G1" series MU303

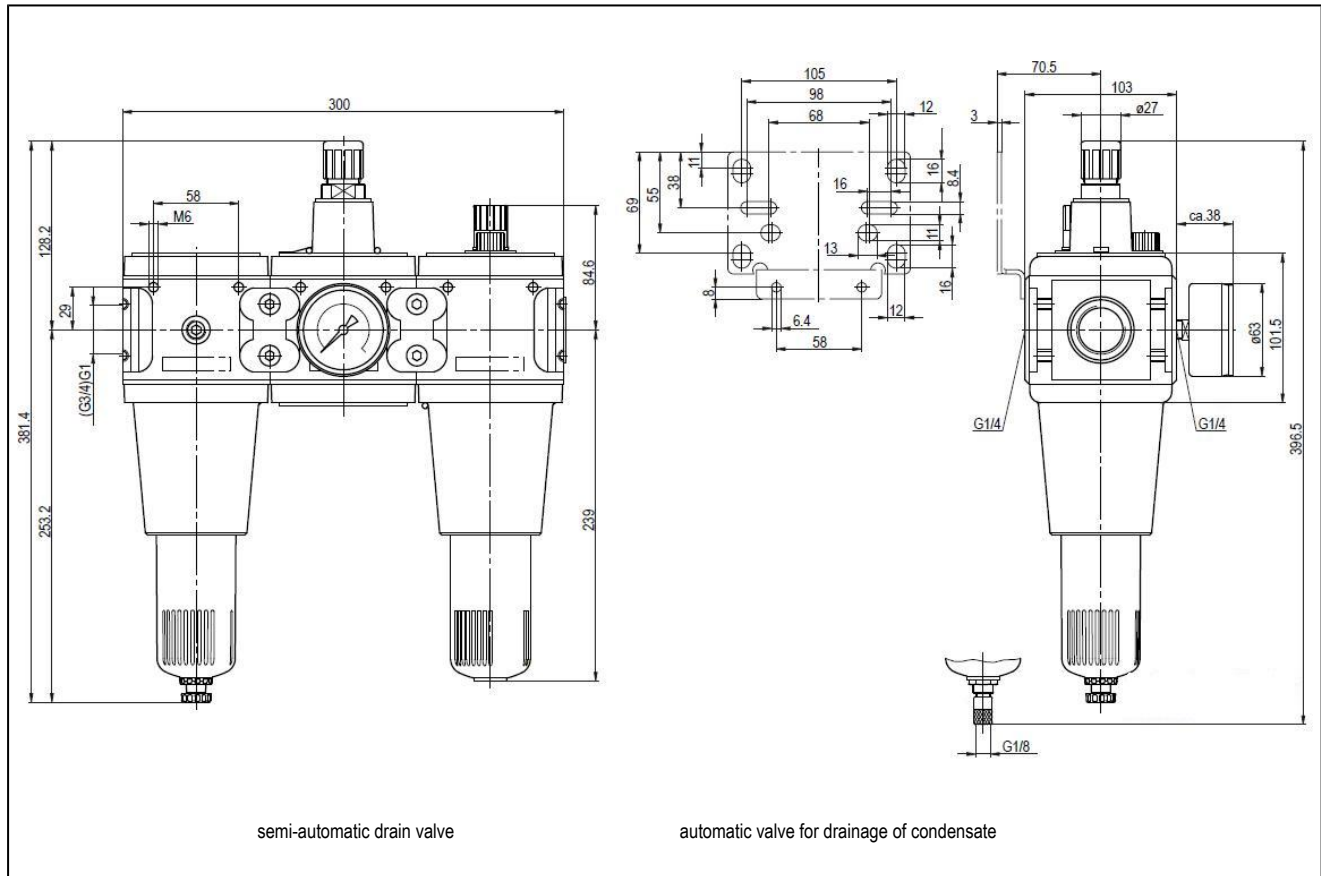


design	diaphragm pressure regulator with relieving, centrifugal filter, sinter-filterelement, semi-automatic drain valve, proportional lubricator and constant air consumption of max. 0,5NI/min
function	regulation of the outlet pressure by turning knob
filter element	5µm
oil metering	1...2 drops/min. at Q <sub>N</sub> = 1000 NI/min
connection	G1" according to ISO228/1
materials	body aluminum, oil- and condensate bowl polycarbonat or metal, seals NBR, knob POM
medium	compressed air
medium temperature	with plastic bowl 0...+60°C, with metal bowl 0...+60°C (with appropriately conditioned compressed air -10...+60°C)
ambient temperature	with plastic bowl 0...+60°C, with metal bowl -10...+60°C
inlet pressure	maximum 16bar, with automatic drainage valve 1,5...16bar
adjustment ranges	0,5...10bar (0,1...3bar / 0,2...6bar / 0,5...16bar on request)
flow direction	is marked by an arrow
type of fixing	installation in a pipe system or wall mounting with mounting bracket
mounting position	vertical, drain screw below
detent	pressure adjustment can be arrested by pushing the turning knob
scope of supply	including manometer
oil recommendation	HP32A (temperature range 0...50°C), NR32 (temperature range -35...85°C)

### type code

		MU303 - 10 H - 0,1/3 - P - A	
connection	1"	10	
flow rate	high flow rate	H	
pressure range	0,1...3bar		0,1/3
	0,2...6bar		0,2/6
	0,5...10bar		0,5/10
	0,5...16bar		0,5/16
bowl	plastic bowl (blank position)		
	plastic bowl with protection cage		P
	metal bowl		M
drain valve	semi-automatic drain valve (blank position)		
	automatic valve for drainage of condensate		A

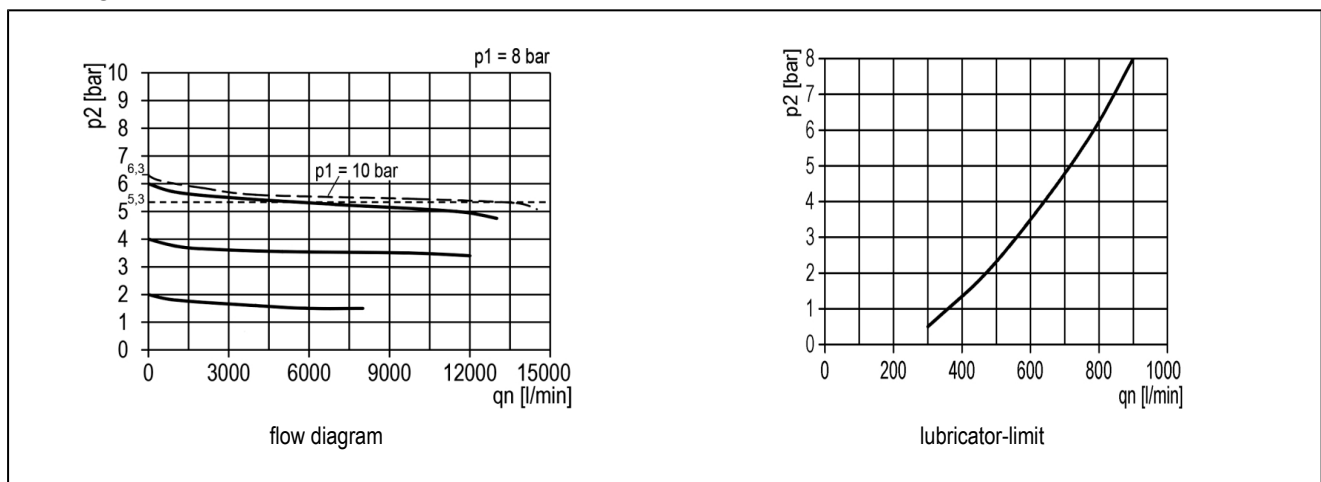
## dimension, details



connection	flow at 6bar* [Nl/min]	maximum inlet pressure [bar]	pressure range [bar]	type
G1"	11300	16	0,5...10	MU303-10H-0,5/10
G1"	11300	16	0,5...10	MU303-10H-0,5/10-P
G1"	11300	16	0,5...10	MU303-10H-0,5/10-M

\*flow rate at input pressure of 8bar, output pressure of 6bar and 1bar pressure drop

## flow diagram, lubricator-limit



## accessories

designation	type
mounting bracket including 2 screws	MMB03-34VH/10H

illustrations are non-binding  
all designs, configurations, measurements and materials are subject to change without prior notice