

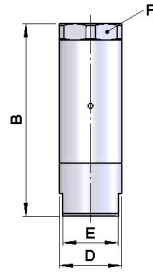
Pressure regulator for pneumatic tools Series RE30, RE31



Design type	Piston pressure regulator with secondary venting, Pressure fixed set
Function	This pressure regulator is mounted directly on the tool to supply it with the exact required pressure. In addition, when disconnecting the tool from the compressed air system, the residual pressure is vented.. This prevents accidental actuation of the tool from causing any damage. Since the pressure is factory-set, this pressure regulator is tamper-proof. The correct pressure at the point of use increases service life and reduces energy costs.
Connection	G1/4" ...G1/2" according to ISO228/1
Materials	Body Aluminium, Internal parts Stainless steel/Brass/Polypropylene PPH, Seal NBR
Medium	filtered compressed air
Medium temperature	0...+80°C
Ambient temperature	0...+80°C
Inlet pressure	max. 25bar
Regulated pressure	see table
Tolerance Regulated pressure	2...3bar +/- 0,3bar, 4...8bar +/- 10%
Minimum pressure differential	2bar (Inlet pressure - Regulated pressure)
Flow direction	is marked by an arrow
Mounting type	Installation in piping system
Mounting position	any
Special versions	NPT thread, Stainless steel version



Dimensional drawing

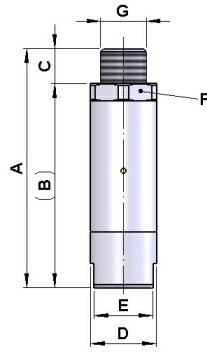


Connection	Regulated pressure [bar]	Flow rate* [Nl/min]	B	D	E	F	Weight [g]	Type
G1/4"	2	500	53,5	19	16	19	33	RE30-14-2
G1/4"	3	550	53,5	19	16	19	33	RE30-14-3
G1/4"	4	600	53,5	19	16	19	33	RE30-14-4
G1/4"	5	650	53,5	19	16	19	33	RE30-14-5
G1/4"	6	700	53,5	19	16	19	33	RE30-14-6
G1/4"	8	800	53,5	19	16	19	33	RE30-14-8
G3/8"	2	1400	63	25	22	25	60	RE30-38-2
G3/8"	4	1800	63	25	22	25	60	RE30-38-4
G3/8"	6	2200	63	25	22	25	60	RE30-38-6
G3/8"	8	2600	63	25	22	25	60	RE30-38-8
G1/2"	2	1400	67,5	30	27	30	90	RE30-12-2
G1/2"	4	1800	67,5	30	27	30	90	RE30-12-4
G1/2"	6	2200	67,5	30	27	30	90	RE30-12-6
G1/2"	8	2600	67,5	30	27	30	90	RE30-12-8
G3/4"	2	2500	101,5	40	34	40	280	RE30-34-2
G3/4"	4	3200	101,5	40	34	40	280	RE30-34-4
G3/4"	6	3900	101,5	40	34	40	280	RE30-34-6
G3/4"	8	4600	101,5	40	34	40	280	RE30-34-8

*Flow rate at inlet pressure 12 bar and 0.5 bar pressure drop



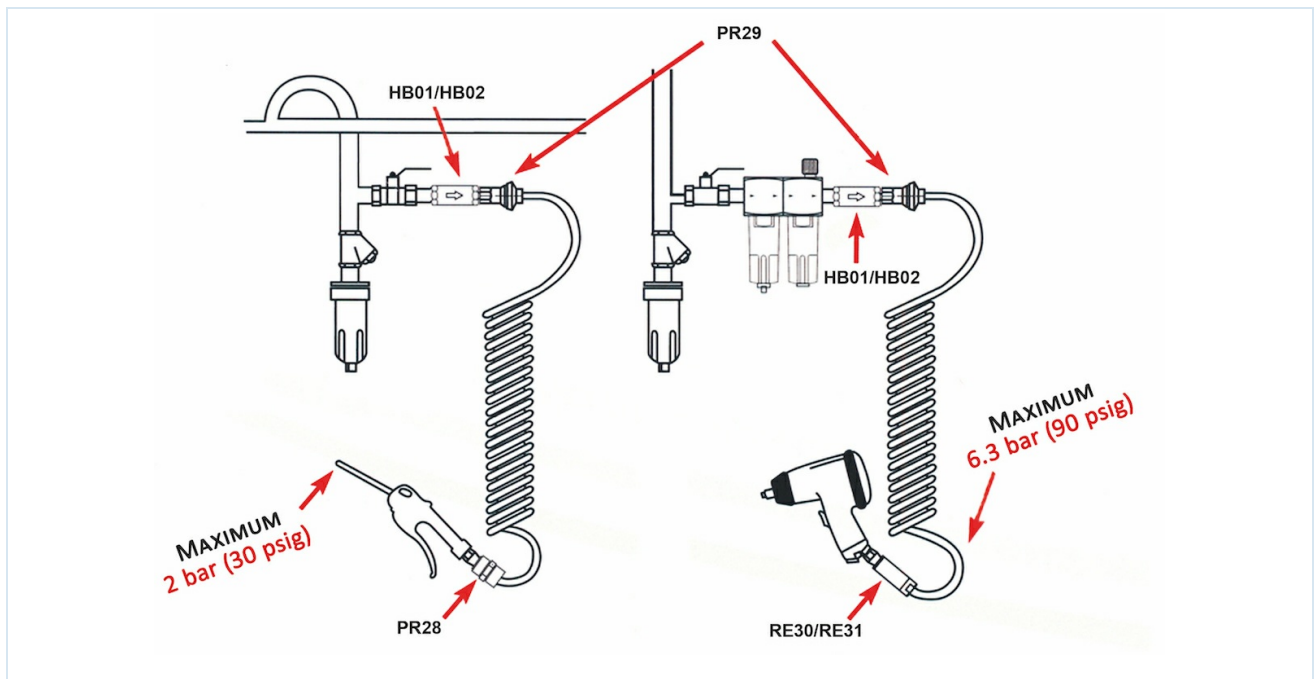
Dimensional drawing



Connection	Regulated pressure [bar]	Flow rate* [NI/min]	A	B	C	D	E	F	Weight [g]	Type
G1/4"	2	500	63,5	53,5	10	19	16	19	40	RE31-14-2
G1/4"	3	550	63,5	53,5	10	19	16	19	40	RE31-14-3
G1/4"	4	600	63,5	53,5	10	19	16	19	40	RE31-14-4
G1/4"	5	650	63,5	53,5	10	19	16	19	40	RE31-14-5
G1/4"	6	700	63,5	53,5	10	19	16	19	40	RE31-14-6
G1/4"	8	800	63,5	53,5	10	19	16	19	40	RE31-14-8

*Flow rate at inlet pressure 12 bar and 0.5 bar pressure drop

Application example



Illustrations non-binding
Design, dimensional and material changes reserved

Pneumatics / Regulators, filters and lubricators / Special pressure regulators / Pressure regulators for pneumatic tools Series RE31

