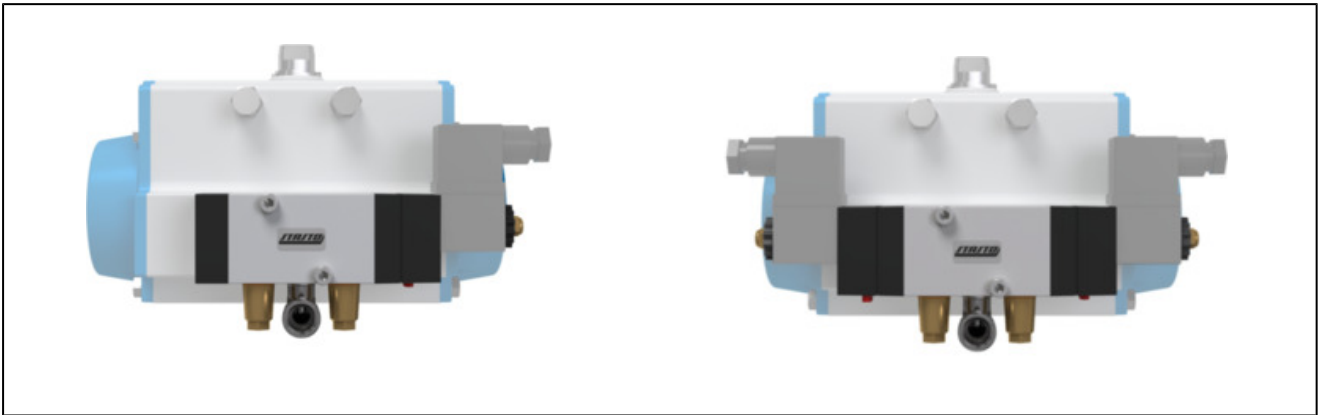


5/2-way solenoid valve according to NAMUR, incl. accessories type ABS51, ABS52, ABS54 and ABS55



design	5/2-way solenoid valve pilot-operated, actuation electrical/internal control air respectively electrical/electrical, manual emergency override
connection	G1/4" according to ISO228/1
materials	body anodized aluminum, spool aluminum, cover plastic, seals NBR
type of fixing	with two mounting screws according to NAMUR-standard and VDI/VDE 3845
mounting position	any
medium	filtered and lubricated or non lubricated compressed air
medium temperature	0... +40°C
ambient temperature	-10...+50°C
scope of supply	2 pieces o-ring 16x2mm, mounting screws M5 x 35, 1 pieces 1/4"-elbow adapter and 2 pieces silencer respectively throttle silencer, 1 pieces (ABS51, 54) respectively 2 pieces (ABS52, 55) silencer M5, ATEX coil additional with 3m cable
electrical data:	
type of coil	type C001 (standard coil), connector size 22mm type EPC (ATEX coil)
electrical connection	connector according to industry form B (see separate datasheet)
standard voltage	230V/50-60Hz, 24V/50-60Hz / 12VDC, 24VDC / 48V/50-60Hz
special voltage	115V/50-60Hz, more on request
acceptable voltage tolerance	± 10%
power consumption	see table "coil"
duty cycle	100% duty cycle (continuous operation)
protection class	IP65 according to EN 60529 by correctly mounted connector (protection against the penetration of dust and jet water)
informations:	please specify voltage and type of current by order CAD files are available on the STASTO Store under www.stasto.eu

designs

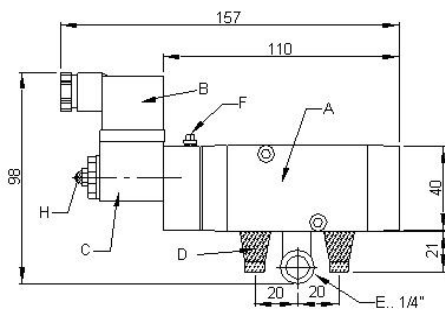
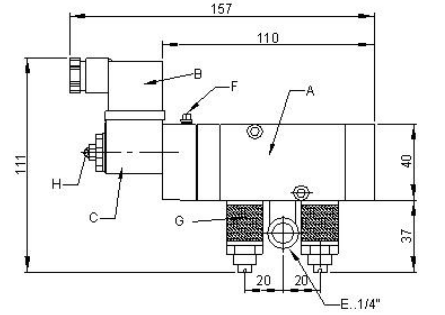
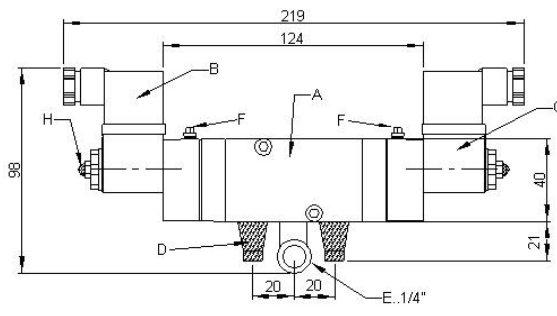
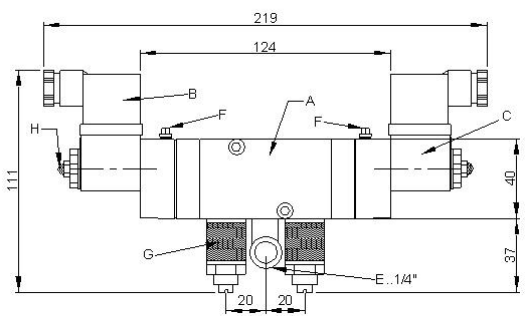
actuation / reset	exhaust air	application	type
electrical/internal control air	silenced	mostly for double acting pneumatic actuators, but also for single acting ¹⁾	ABS51
electrical/electrical	silenced		ABS52
electrical/internal control air	throttled and silenced		ABS54
electrical/electrical	throttled and silenced		ABS55

with type ABS54 and ABS55 through throttle the speed of the actuator can be adjusted. This has a positive effect especially for opening a butterfly valve, so the end caps are reached slowly and the actuator is saved.

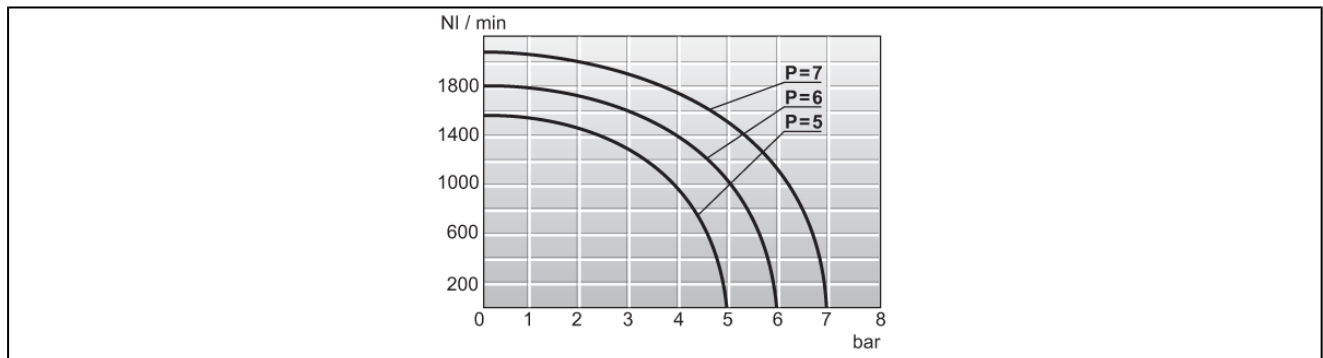
through this construction it is possible to avoid a water hammer effect, so these ABS valves are used for all kinds of pneumatic actuated ON/OFF-armatures, e.g. ball valves.

¹⁾ thus with ABS54 and ABS55 you can control also the switching time for single acting actuator in both direction and also support the spring force with compressed air. so it is possible to reduce the water hammer effect also for single acting actuator.


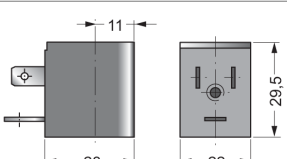
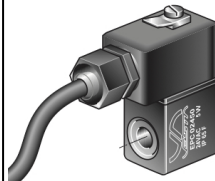
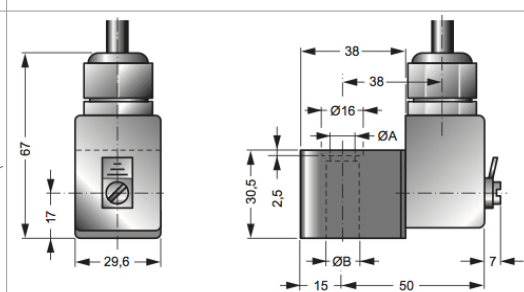
dimensions

<p>dimensions ABS51</p>  <p>component width: 30mm</p>	<p>dimensions ABS54</p>  <p>component width: 30mm</p>
<p>dimensions ABS52</p>  <p>component width: 30mm</p>	<p>dimensions ABS55</p>  <p>component width: 30mm</p>

flow diagram



coils

		voltage	protection class	power consumption at 20 °C	type
		24VDC / 48V / 50-60Hz	IP65	3W/5VA	C001-03
		24V/50-60Hz / 12VDC		5VA/3W	C001-04
		230V/50-60Hz		5VA	C001-22
		115V/50-60Hz		5VA	C001-23
		24VDC	Ex II 2G Ex mb IIC T5 Gb	3,0W	EPC02400
		24V/50-60Hz		3,2W	EPC02450
		110V/50-60Hz		3,2W	EPC11050
		230V/50-60Hz		3,2W	EPC23050

illustrations are non-binding
all designs, configurations, measurements and materials are subject to change without prior notice