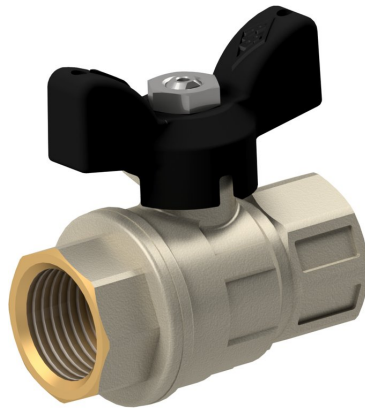
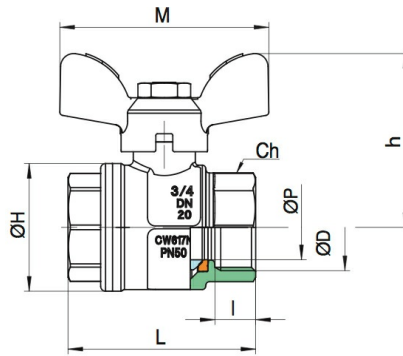


Brass ball valves Series 1820



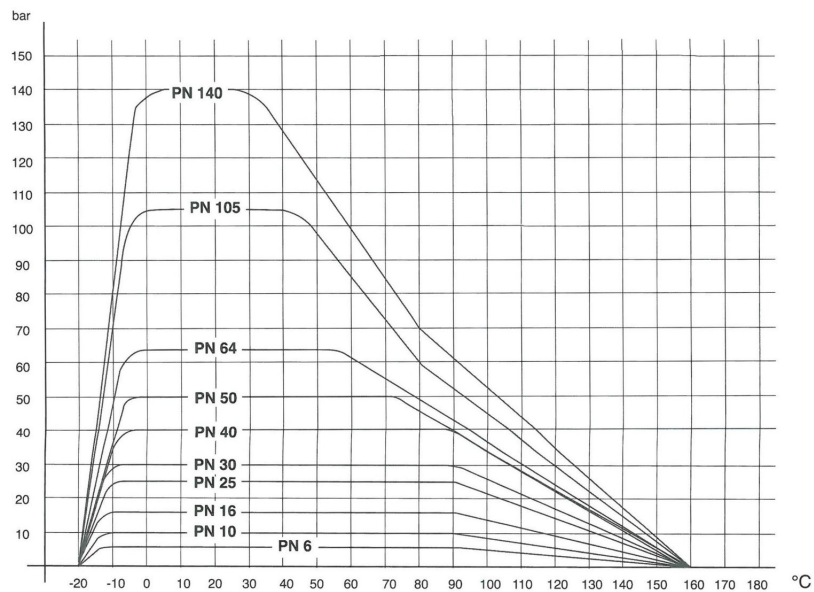
Design type	Shut-off valve with floating ball, full bore passage
Connection	RP1/4" and RP3/8" according to ISO7/1, G1/2"...G1" according to ISO228/1
Materials	Body brass CW617N nickel-plated, Ball, brass CW617N, hard chrome-plated, Ball seal PTFE, Adjustable spindle seal PTFE/NBR, Rotary knob aluminium black coated
Mounting type	Installation in rigid piping system
Mounting position	any
Application range	Gases and liquids of group 2 in accordance with PED 2014/68/EU that do not attack the materials used.
Medium temperature	-20...+160°C
Operating pressure	Vacuum 1mbar up to Rated pressure according to table for operating temperatures up to 80°C. Permissible operating pressure for higher temperatures see pressure-temperature diagram.
Actuation	by turning the handle 90°





Connection	Nominal size DN[mm]	PN [bar]	CH	h	H	I	M	L	P	Kv value [m³/h]	Weight [approx. kg]	Type
RP1/4"	8	64	20	42	23	11	50	51,5	10	5,4	0,14	1820-1/4"
RP3/8"	10	64	20	42	23	11,4	50	51,5	10	6	0,12	1820-3/8"
G1/2"	15	64	25	46	33	13,5	50	55	15	16,3	0,18	1820-1/2"
G3/4"	20	50	31	56	39	12,5	64	57,5	20	29,5	0,28	1820-3/4"
G1"	25	50	38	60	49	15	64	69,5	25	43	0,45	1820-1"

Pressure-temperature diagram



Illustrations non-binding
Design, dimensional and material changes reserved

Armatures / Ball valves - manually operated / Ball valves - brass / Ball valve made of brass Series 1820

