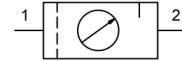


Maintenance unit G1/2" Series Gold MU304



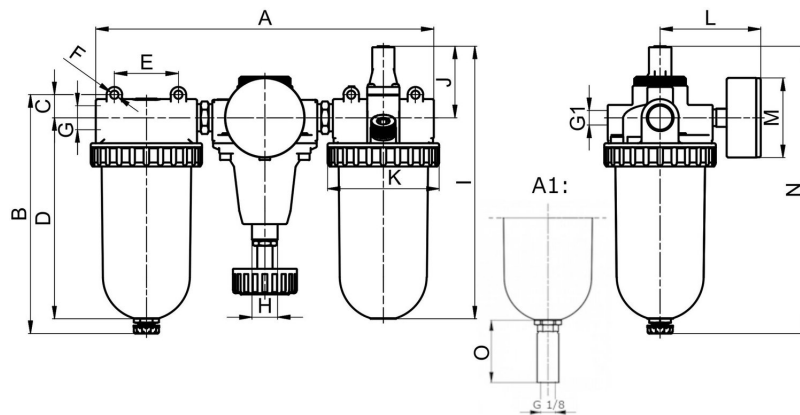
Design type	Diaphragm pressure regulator with secondary venting, Centrifugal force principle filter, Sintered filter element, Proportional lubricator, Oil filling possible under pressure
Connection	G1/2" according to ISO228/1
Materials	Housing Zinc die casting, Oil and condensate reservoir Polycarbonate or Metal
Function	Pressure regulation with filtration and oil lubrication of the compressed air
Filter element	5µm
Mounting type	Installation in piping system or Wall mounting using mounting bracket
Mounting position	vertical, Drain screw bottom
Medium	Compressed air
Oil recommendation	HP32A (Temperature range 0...50°C), NR32 (Temperature range -35...85°C)
Oil metering	1...2 drops/min at QN = 1000 NI/min
Medium temperature	with plastic bowl 0...+60°C, with metal bowl 0...+60°C (with appropriately conditioned compressed air -10...+60°C)
Ambient temperature	with plastic bowl 0...+60°C, with metal bowl -10...+60°C
Inlet pressure	1,5...16bar or rather 1,5...20bar according to table, with automatic drain valve 1,5...16bar
Control ranges	0,5...10bar and 0,5...16bar with metal bowl (0,5...3/ 0,5...6 on request)
Flow direction	is marked by an arrow
Scope of delivery	including pressure gauge
Special version	Inlet pressure 25bar



Order code

		MU304 - 12 H - 0,5/10 - P - F5 - A1					
Connection	1/2"	12					
Flow rate	Standard (Leave blank)						
	high flow rate	H					
Pressure range	0,5...10bar		0,5/10				
	0,5...16bar		0,5/16				
Reservoir	Plastic reservoir (Leave blank)						
	Plastic reservoir with protective cage					P	
	Metal container					M	
Filter element	5µm					F5	
Drain valve	semi-automatic drain valve (Leave blank)						
	automatic drain valve						A1

Dimensional drawing



A1: automatic drain valve

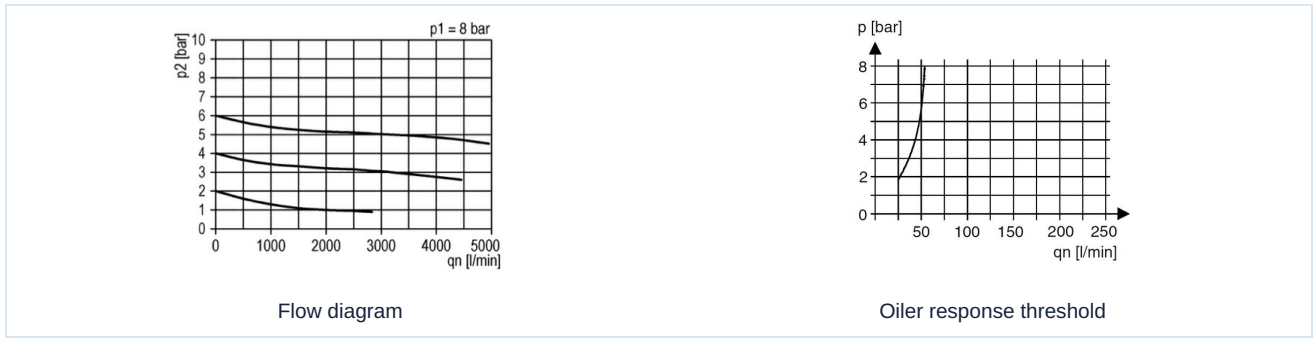
Connection G	A	B	C	D	E	F	G1	H	I	J	K	L	M	N	O
G1/2"	250	186,5	18	157	50	6,2	G1/4"	M20x1,5	212	55	87	71,5	63	223,5	34

Connection	Flow rate at 6 bar* [Nl/min]	max. inlet pressure [bar]	Pressure range [bar]	Weight [approx. kg]	Type
G1/2"	3200	16	0,5...10	2,5	MU304-12H-0,5/10-F5
G1/2"	3200	16	0,5...10	3,2	MU304-12H-0,5/10-P-F5
G1/2"	3200	20	0,5...16	2,7	MU304-12H-0,5/16-M-F5

*Flow rate data at an inlet pressure of 8 bar, an outlet pressure of 6 bar and a pressure drop of 1 bar



Flow diagram, Oiler response threshold



Accessories

Designation	Type
Holding angle bracket with neck nut for pressure regulators M20x1,5	MMP04-38/10
Holding angle bracket with 2 screws for lubricators and filters	MMB04-38H/10

Illustrations non-binding

Design, dimensional and material changes reserved

Pneumatics / Regulators, filters and lubricators / Maintenance devices - series Gold / Maintenance unit Series Gold MU304-P / [MU304-12H-0,5/10-P-F5] Maintenance unit MU304-12H-0,5/10-P-F5

