

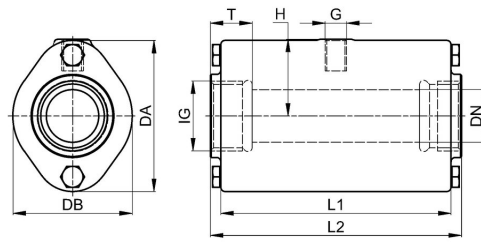
Pinch valve Series PI08



Design type	direct-acting, with replaceable hose insert and cylindrical, unrestricted passage
Connection	G1/2" ...G4"
Materials	Housing 1/2" POM, 3/4" ...4" Aluminium, Hose insert Natural rubber abrasion-resistant, Stainless steel connection sleeves 1.4404
Mounting type	Installation in rigid piping system
Mounting position	any
Application range	dusty products(Cement, Chalk, Plaster of Paris,Flour, etc.), Granules, Sand, Clay, Sound, Pastes, contaminated fluids, Slurries
Medium temperature	-10...+80°C, (see table hose inserts)
Operating pressure	G1/2" ...G1" max. 5,5bar,G11/4" ...G4" max. 6bar
Control pressure	1.8...2.5 bar higher than the actual operating pressure, max. control pressure 8bar
Control medium	Compressed air, Water or neutral gases
Approvals	ATEX on request
Special versions	Housing in plastic or stainless steel, Connection sleeves in POM



Dimensions



Connection IG	DN	DA	DB	L1	L2	T	G	H	Pilot volume [l]	Weight [approx. kg]	Type
G1/2"	15	56	47	85	95	15	G1/8"	28	0,05	0,3	PI08-12-RZ0-18
G3/4"	20	62	49	93	103	17	G1/8"	32	0,07	0,5	PI08-34-RZA-18
G1"	25	72	57	110	120	20	G1/8"	37	0,09	0,8	PI08-10-RZA-18
G1 1/4"	32	80	66	130	140	21	G1/4"	45	0,13	1,1	PI08-114-RZA-14
G1 1/2"	40	90	77	150	160	21	G1/4"	50	0,22	1,5	PI08-112-RZA-14
G2"	50	110	88	175	185	25	G1/4"	60	0,36	2,2	PI08-20-RZA-14
G2 1/2"	65	139	115	173	200	30	G1/4"	74	0,44	3,0	PI08-212-RZA-14
G3"	80	173	133	213	230	33	G1/4"	90	0,88	4,4	PI08-30-RZA-14
G4"	100	203	156	264	2280	20	G1/4"	107	1,80	6,6	PI08-40-RZA-14

Hose inserts

Material	Short designation	Food compliance	electrically conductive	Color	Medium temperature [°C]
Neoprene	CR	-	-	black	-10...+100
Natural rubber	NR- LS	FDA	-	black	-10...+80
Natural rubber	NR - LW	FDA	-	white	-10...+80
Natural rubber High-temperature version	NR - H	-	-	black	-10...+100
Natural rubber	NR - LF	-	x	black	-10...+80
Natural rubber abrasion-resistant	NR	-	-	black	-10...+80
EPDM	EPDM - LS	FDA/1935	-	black	-10...+90(120*)
EPDM	EPDM - LF	FDA/1935	x	black	-10...+90(120*)
EPDM	EPDM - LW	FDA	-	white	-10...+90
EPDM High-temperature version	EPDM - LW / NR -H	FDA	-	white	-10...+100
Viton	FPM / FKM	-	-	black	-10...+120
Silicone	Q	-	-	red	-10...+130
Nitrile rubber	NBR - LF	FDA	x	black	-10...+70
Nitrile rubber	NBR - LS	FDA	-	black	-10...+80
Nitrile rubber	NBR - LW	FDA	-	white	-10...+80
Nitrile rubber	NBR	-	-	black	-10...+100
Polyethylene (Hypalon)	CSM	-	-	black	-10...+100
Butyl	IIR	-	-	black	-10...+90

* short-term max. 120°C

Illustrations non-binding

Design, dimensional and material changes reserved

Armatures / Valves, butterfly valves and gate valves - automatically operated / Pinch valves - pneumatically operated / Pinch valve Series PI08

Version 4

138086 / Generated 2026/23 EN

MADE IN EUROPE

+43 512 52076

austria@stasto.eu

© STASTO Automation KG

www.stasto.com

Open series online

Page 2 / 2

