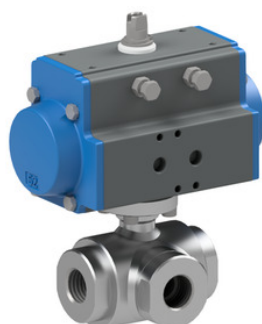


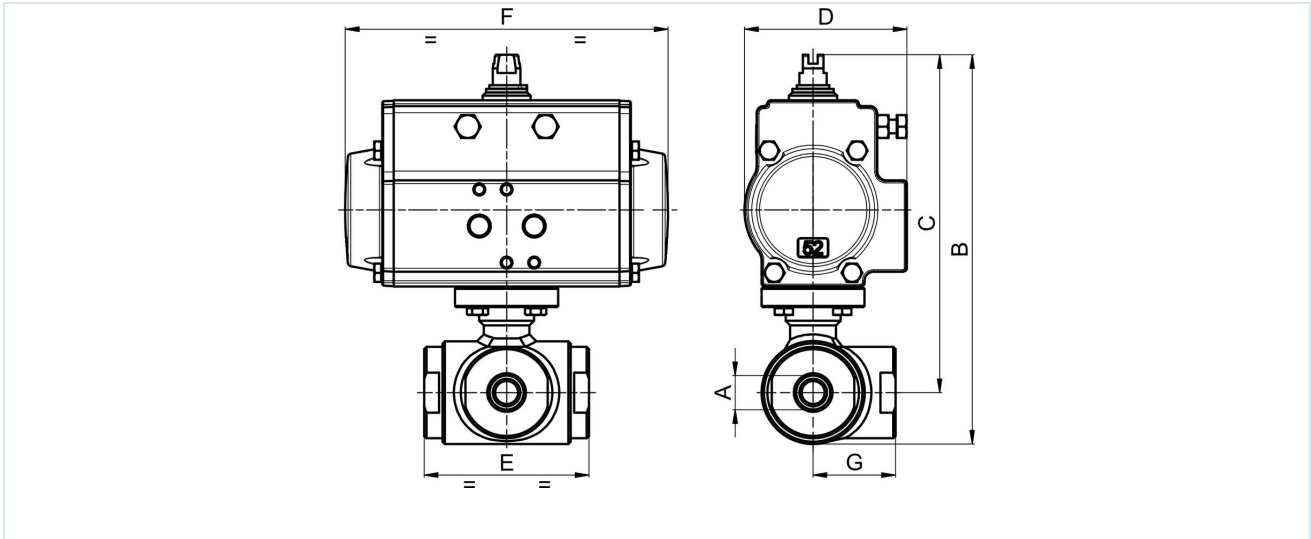
## Three-way stainless steel ball valves with pneumatic rotary actuator Series BA541 (T-port hole) and BA542 (L-bore)



Design type	Actuator: piston actuator with 2 opposed pistons, elastic sealing, actuator in all details in accordance with ISO 5211 or according to NAMUR recommendations, End positions adjustable on both sides +/-5° Ball valve: full bore passage, Triple-shell sealing ball, non-overlapping
Function	available in double-acting or single-acting Version
Connection	G1/4"...G4" according to ISO228/1
Materials Standard version	Actuator: Hard anodized aluminium, Pinion, nickel-plated steel, Piston guide POM, Seals NBR Ball valve: Housing Stainless steel 1.4404 polished, Ball Stainless steel 1.4404, Seals MPTFE/FKM
Application range	Fluids and gases of group 1 and 2 in accordance with PED 2014/68/EU that do not attack the materials used
Medium temperature	-20...+170°C
Ambient temperature	-20...+85°C
Operating pressure	0bar up to Operating pressure according to table and pressure-temperature diagram
Control medium	filtered and lubricated or non-lubricated compressed air
Control pressure	5,5...8bar, Adaptation to lower pilot pressures possible on request
Mounting type	Installation in rigid piping system
Mounting position	any
Special version	Stainless steel pinion, ATEX EX II 2G Ex h IIC T4 Gb / II 2D Ex h IIIC T135°C Db, Ambient temperatures -40...+85°C or rather -20...150°C
Accessories	assembled manual, pneumatic or electric control valve electrical end position feedback, Positioner in I/P or P/P version Adjustment of the switching speed
Ordering note	Please also specify control pressure, operating medium, operating pressure and operating temperature when ordering. When ordering, the switching function must be specified (see "switching diagram").
Application note	The pressure and temperature specifications are maximum values for normal conditions, for lubricating or non-degreasing media. Degreasing media in particular reduce the specified values and increase the required torque. For these special cases, we recommend prior consultation. When selecting the valve, the lowest control pressure occurring in the system must be taken as the basis.



## Dimensions



### Ball valves with double-acting rotary actuator

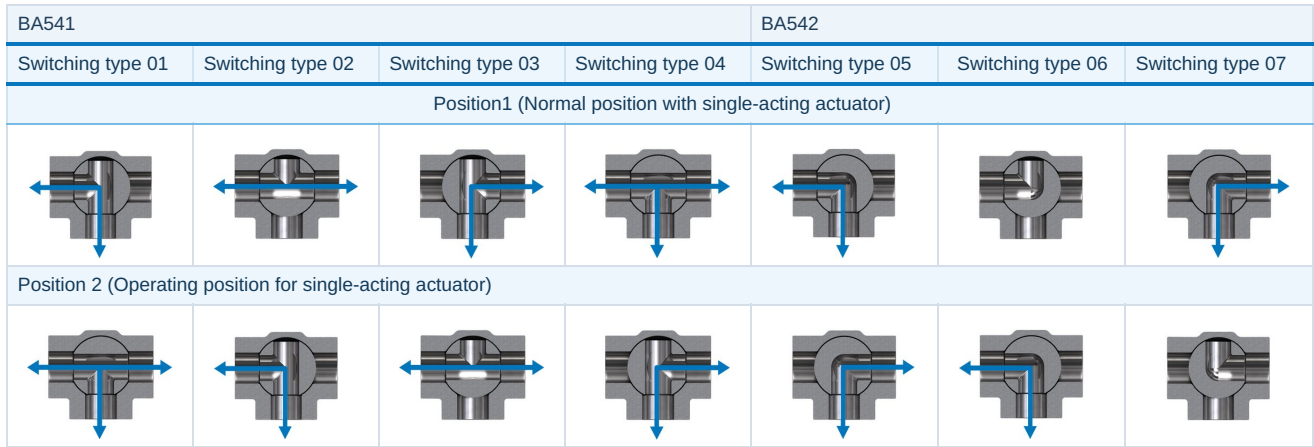
Connection A	Nominal size DN[mm]	max. operating pressure [bar]	B	C	D	E	F	G	Actuator type	Weight [approx. kg]	Type BA541 T-port hole	Type BA542 L-bore
G1/4"	12	100	171	148	71	72	141	36	PAD052	2,1	BA541-14-D0	BA542-14-D0
G3/8"	12	100	171	148	71	72	141	36	PAD052	2,1	BA541-38-D0	BA542-38-D0
G1/2"	15	100	177	151	71	82	141	41	PAD052	2,3	BA541-12-D0	BA542-12-D0
G3/4"	20	100	200	170	81	92	164	46	PAD063	3,7	BA541-34-D0	BA542-34-D0
G1"	25	64	209	174	81	102	164	51	PAD063	4,3	BA541-10-D0	BA542-10-D0
G1 1/4"	32	64	255	213	95	118	210	59	PAD075	9,5	BA541-114-D0	BA542-114-D0
G1 1/2"	40	64	270	220	95	134	210	67	PAD075	9,8	BA541-112-D0	BA542-112-D0
G2"	50	40	278	223	95	144	210	72	PAD075	11,1	BA541-20-D0	BA542-20-D0
G2 1/2"	65	40	308	247	106	160	241	80	PAD085	14,8	BA541-212-D0	BA542-212-D0
G3"	80	40	354	274	123	200	275	100	PAD100	25,7	BA541-30-D0	BA542-30-D0
G4"	100	16	418	323	137	240	275	120	PAD115	41,4	BA541-40-D0	BA542-40-D0

### Ball valves with single-acting rotary actuator

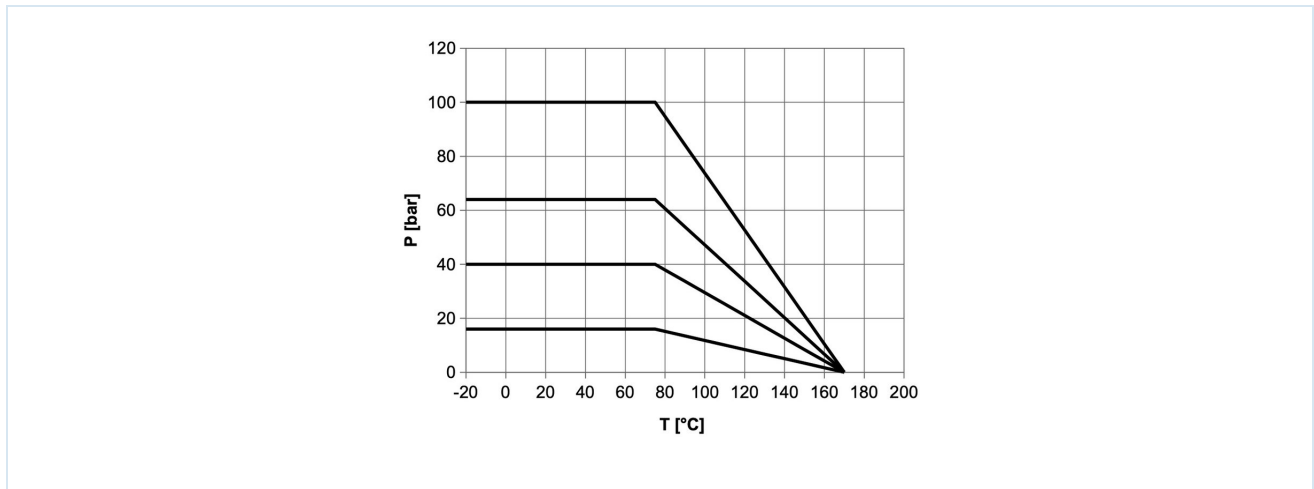
Connection A	Nominal size DN[mm]	max. operating pressure [bar]	B	C	D	E	F	G	Actuator type	Weight [approx. kg]	Type BA541 T-port hole	Type BA542 L-bore
G1/4"	12	100	260	237,5	95	72	210	36	PAS075	4,7	BA541-14-S0	BA542-14-S0
G3/8"	12	100	260	237,5	95	72	210	36	PAS075	4,7	BA541-38-S0	BA542-38-S0
G1/2"	15	100	266	240	95	82	210	41	PAS075	4,9	BA541-12-S0	BA542-12-S0
G3/4"	20	100	232	201,5	106	92	241	46	PAS085	6,8	BA541-34-S0	BA542-34-S0
G1"	25	64	314	279	123	102	275	51	PAS100	10,0	BA541-10-S0	BA542-10-S0
G1 1/4"	32	64	282	239,5	123	118	275	59	PAS100	13,7	BA541-114-S0	BA542-114-S0
G1 1/2"	40	64	332	281,5	137	134	333	67	PAS115	18,5	BA541-112-S0	BA542-112-S0
G2"	50	40	339	284	137	144	333	72	PAS115	19,7	BA541-20-S0	BA542-20-S0
G2 1/2"	65	40	367	306	148	160	372	80	PAS125	24,3	BA541-212-S0	BA542-212-S0
G3"	80	40	447	367	186	200	500	100	PAS160	50,3	BA541-30-S0	BA542-30-S0
G4"	100	16	477	382	186	240	500	120	PAS160	62,6	BA541-40-S0	BA542-40-S0



## Circuit diagram



## Pressure-temperature diagram



Illustrations non-binding

Design, dimensional and material changes reserved

[Armatures](#) / [Ball valves - automatically operated](#) / [Ball valves - pneumatically operated](#) / [Ball valve with pneumatic actuator Series BA541, BA542](#)

