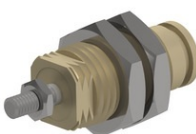


## Screw-in cylinder Series CZ



Design type	Screw-in cylinder, single-acting
Socket	Brass nickel-plated
Piston rod	Stainless steel X10 Cr Ni S 18-09
Cylinder tube	Brass nickel-plated
Spring	Spring steel
Seals	NBR
Stopper	mechanical
Ambient temperature	-20...+80°C
Medium temperature	0...+40°C
Lubrication	not necessary
Medium	filtered compressed air
Operating pressure	2...7bar
Scope of delivery	incl. Piston rod nut

### CZ... single-acting, Front spring

	Type code			
	<b>CZ</b>	--	-	--
	Diameter [mm] 6, 10, 16	Stroke [mm] 5, 10, 15	T Piston rod with thread S Piston rod without thread	

Diameter [mm]	A	B	C	D	E	F	G			H	M	CH	N	O	P	Type
							5	10	15							
6	M10x1	8,5	M5	M3	9	5	27,5	34,5	41,5	8	3	14	1,5	1,2	7,3	CZ6-..T
10	M15x1,5	12	M5	M4	14	7	33,5	40	47	10,5	4	19	1,5	1,7	9,8	CZ10-..T
16	M22x1,5	19	M5	M5	20	9	40	45	50	13	5	27	2	1,7	16,8	CZ16-..T

Illustrations non-binding  
Design, dimensional and material changes reserved

Pneumatics / Cylinders / Cartridge cylinder / Cartridge cylinder Series CZ

