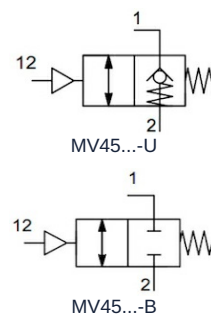
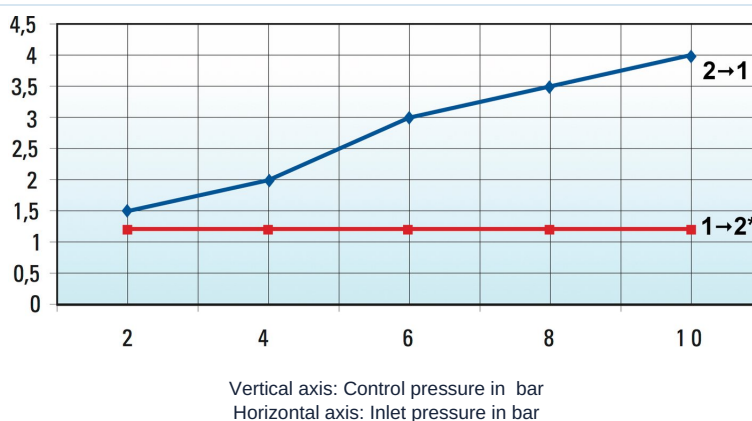


Banjo bolt shut-off valve Series MV45



Design type	Banjo bolt shut-off valve, pneumatically unlockable, optionally with push-in fitting, threaded fitting or female-thread banjo fitting
Material	Body Nickel-plated brass, Piston Stainless steel, Stainless steel spring, Seals NBR-PU, Sealing ring Polyamide (PA)
Function	U: free flow in one direction, Prevention of flow in the opposite direction, with pneumatic signal free flow in both directions B: double pilot operated check valve, with pneumatic signal free flow in both directions
Threaded connections	G1/8" ...G1/2" after ISO228/1
Hose outside diameter	6mm, 8mm, 10mm and 12mm
recommended materials	Polyamide (PA), Polyurethane (PU/CP), Polyethylene (PE), PTFE (PT)
Hose tolerances	+/-0,05mm up to diameter 10mm, +/-0,1mm from diameter 12mm
Mounting position	any
Medium	Compressed air, neutral gases
Medium temperature	-5...+70°C
Operating pressure	2...10bar

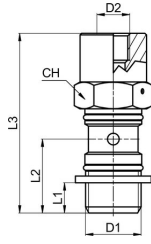
Control pressure diagram



*only for series MV45...-B



Dimensions without ring piece

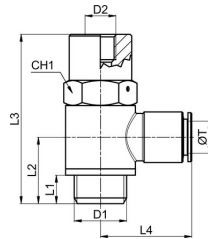


D1	D2	L1	L2	L3	Flow rate [Nl/min]	CH	Weight [g]	Type
G1/8"	M5	6	15,5	42	170	13	24	MV45-00-18-U
G1/4"	M5	8	18,5	47	345	17	47	MV45-00-14-U
G3/8"	G1/8"	9	21	53,5	700	20	78	MV45-00-38-U
G1/2"	G1/8"	10	24,5	60	1050	25	139	MV45-00-12-U

D1	D2	L1	L2	L3	Flow rate [Nl/min]	CH	Weight [g]	Type
G1/8"	M5	6	15,5	42	440	13	24	MV45-00-18-B
G1/4"	M5	8	18,5	47	660	17	47	MV45-00-14-B
G3/8"	G1/8"	9	21	53,5	965	20	78	MV45-00-38-B
G1/2"	G1/8"	10	24,5	60	1450	25	139	MV45-00-12-B

*Flow rate at inlet pressure 6 bar and 1 bar pressure drop

Dimensions with Push-in fitting ring piece



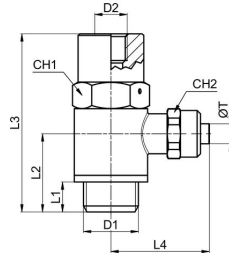
D1	D2	ØT Hose outer diameter	L1	L2	L3	L4	Flow rate [Nl/min]	CH1	Weight [g]	Type
G1/8"	M5	6	6	15,5	42	22,5	170	13	40	MV45MA35-06-18-U
G1/4"	M5	6	8	18,5	47	24	345	17	69	MV45MA35-06-14-U
G1/4"	M5	8	8	18,5	47	24,5	345	17	70	MV45MA35-08-14-U
G3/8"	G1/8"	8	9	21	53,5	26,5	700	20	116	MV45MA35-08-38-U
G3/8"	G1/8"	10	9	21	53,5	29	700	20	117	MV45MA35-10-38-U
G1/2"	G1/8"	12	10	24,5	60	31,5	1050	25	196	MV45MA35-12-12-U

D1	D2	ØT Hose outer diameter	L1	L2	L3	L4	Flow rate [Nl/min]	CH1	Weight [g]	Type
G1/8"	M5	6	6	15,5	42	22,5	440	13	40	MV45MA35-06-18-B
G1/4"	M5	6	8	18,5	47	24	660	17	69	MV45MA35-06-14-B
G1/4"	M5	8	8	18,5	47	24,5	660	17	70	MV45MA35-08-14-B
G3/8"	G1/8"	8	9	21	53,5	26,5	965	20	116	MV45MA35-08-38-B
G3/8"	G1/8"	10	9	21	53,5	29	965	20	117	MV45MA35-10-38-B
G1/2"	G1/8"	12	10	24,5	60	31,5	1450	25	196	MV45MA35-12-12-B

*Flow rate at inlet pressure 6 bar and 1 bar pressure drop



Dimensions with Compression fitting ring piece



D1	D2	Hose diameter ØT D/d [mm]	L1	L2	L3	L4	Flow rate [Nl/min]	CH1	CH2	Weight [g]	Type
G1/8"	M5	6/4	6	15,5	42	25	170	13	12	43	MV45MC23-06-18-U
G1/4"	M5	6/4	8	18,5	47	26,5	345	17	12	72	MV45MC23-06-14-U
G1/4"	M5	8/6	8	18,5	47	27,5	345	17	14	74	MV45MC23-08-14-U
G3/8"	G1/8"	8/6	9	21	53,5	29,5	700	20	14	117	MV45MC23-08-38-U
G3/8"	G1/8"	10/8	9	21	53,5	30,5	700	20	16	119	MV45MC23-10-38-U

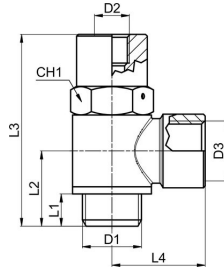
*Flow rate at inlet pressure 6 bar and 1 bar pressure drop

D1	D2	Hose diameter ØT D/d [mm]	L1	L2	L3	L4	Flow rate [Nl/min]	CH1	CH2	Weight [g]	Type
G1/8"	M5	6/4	6	15,5	42	25	440	13	12	43	MV45MC23-06-18-B
G1/4"	M5	6/4	8	18,5	47	26,5	660	17	12	72	MV45MC23-06-14-B
G1/4"	M5	8/6	8	18,5	47	27,5	660	17	14	74	MV45MC23-08-14-B
G3/8"	G1/8"	8/6	9	21	53,5	29,5	965	20	14	117	MV45MC23-08-38-B
G3/8"	G1/8"	10/8	9	21	53,5	30,5	965	20	16	119	MV45MC23-10-38-B

*Flow rate at inlet pressure 6 bar and 1 bar pressure drop



Dimensions with Female threaded ring fitting



D1	D2	D3	L1	L2	L3	L4	Flow rate [Nl/min]	CH1	Weight [g]	Type
G1/8"	M5	G1/8"	6	15,5	42	18	170	13	39	MV45RA042-18-18-U
G1/4"	M5	G1/4"	8	18,5	47	22	345	17	72	MV45RA042-14-14-U
G3/8"	G1/8"	G3/8"	9	21	53,5	26	700	20	118	MV45RA042-38-38-U
G1/2"	G1/8"	G1/2"	10	24,5	60	32	1050	25	205	MV45RA042-12-12-U

D1	D2	D3	L1	L2	L3	L4	Flow rate [Nl/min]	CH1	Weight [g]	Type
G1/8"	M5	G1/8"	6	15,5	42	18	440	13	39	MV45RA042-18-18-B
G1/4"	M5	G1/4"	8	18,5	47	22	660	17	72	MV45RA042-14-14-B
G3/8"	G1/8"	G3/8"	9	21	53,5	26	965	20	118	MV45RA042-38-38-B
G1/2"	G1/8"	G1/2"	10	24,5	60	32	1450	25	205	MV45RA042-12-12-B

*Flow rate at inlet pressure 6 bar and 1 bar pressure drop

Illustrations non-binding

Design, dimensional and material changes reserved

Pneumatics / Flow control valves / Unidirectional valves / Unidirectional stop valve Series MV45-U

