

Racord drept de reducere Serie C-GR



Corp de bază cu piuliță și inel tăietor



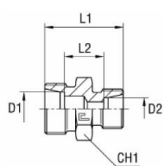
B4-inel tăietor



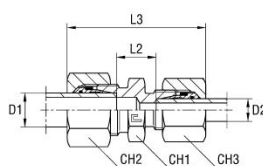
B3-inel tăietor

Tip constructiv	Racord cu inel tăietor, cu inel tăietor B3 sau B4
Diametru exterior al țevii	6...38mm
Material	Oțel zincat galvanizat
conform norme	EN ISO 8434-1 (DIN 2353)
Mediu	lichide și gaze neutre care nu atacă materialele utilizate
Temperatura mediului	B3-inel tăietor -40...+120°C B4-inel tăietor NBR -35...+100°C (FKM la cerere)
Presiune de lucru	Presiune nominală conform tabelului

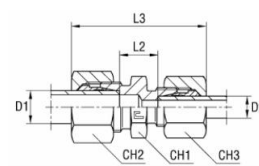
Dimensiuni



Corp de bază



cu inel tăietor B4

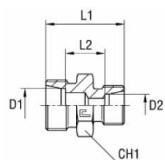


cu inel tăietor B3

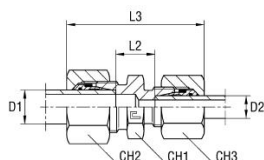
Serie	PN [bar]	Diametru conductă		L1	L2	L3	CH1	CH2	CH3	Tip Corp de bază	Tip cu inel B4	Tip cu inel B3
		D1	D2									
L	500	8	6	25	11	40,5	14	17	14	C-GR08/06LX	C-GR08/06ZL	C-GR08/06L
		10	6	26	12	41,5	17	19	14	C-GR10/06LX	C-GR10/06ZL	C-GR10/06L
		10	8	26	12	42	17	19	17	C-GR10/08LX	C-GR10/08ZL	C-GR10/08L
	400	12	6	27	13	42	19	22	14	C-GR12/06LX	C-GR12/06ZL	C-GR12/06L
		12	8	27	13	42,5	19	22	17	C-GR12/08LX	C-GR12/08ZL	C-GR12/08L
		12	10	28	14	43,5	19	22	19	C-GR12/10LX	C-GR12/10ZL	C-GR12/10L
		15	10	29	15	45	24	27	19	C-GR15/10LX	C-GR15/10ZL	C-GR15/10L
		15	12	29	15	44,5	24	27	22	C-GR15/12LX	C-GR15/12ZL	C-GR15/12L
		18	10	30	15,5	47	27	32	19	C-GR18/10LX	C-GR18/10ZL	C-GR18/10L
		18	12	30	15,5	46,5	27	32	22	C-GR18/12LX	C-GR18/12ZL	C-GR18/12L
	250	18	15	31	16,5	48	27	32	27	C-GR18/15LX	C-GR18/15ZL	C-GR18/15L
		22	12	32	17,5	48,5	32	36	22	C-GR22/12LX	C-GR22/12ZL	C-GR22/12L
		22	15	33	18,5	50	32	36	27	C-GR22/15LX	C-GR22/15ZL	C-GR22/15L
		22	18	33	18	51	32	36	32	C-GR22/18LX	C-GR22/18ZL	C-GR22/18L
		28	18	34	19	52	41	41	32	C-GR28/18LX	C-GR28/18ZL	C-GR28/18L
28		22	36	21	54	41	41	36	C-GR28/22LX	C-GR28/22ZL	C-GR28/22L	
35		22	39	21	59	46	50	36	C-GR35/22LX	C-GR35/22ZL	C-GR35/22L	
35		28	39	21	59	46	50	41	C-GR35/28LX	C-GR35/28ZL	C-GR35/28L	



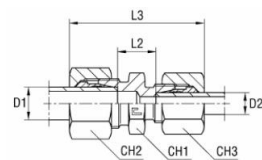
Dimensiuni



Corp de bază



cu inel tăietor B4



cu inel tăietor B3

Serie	PN [bar]	Diametru conductă		L1	L2	L3	CH1	CH2	CH3	Tip Corp de bază	Tip cu inel B4	Tip cu inel B3
		D1	D2									
S	800	8	6	32	18	48	17	19	17	C-GR08/06SX	C-GR08/06ZS	C-GR08/06S
		10	6	32	17,5	48,5	19	22	17	C-GR10/06SX	C-GR10/06ZS	C-GR10/06S
		10	8	32	17,5	48,5	19	22	19	C-GR10/08SX	C-GR10/08ZS	C-GR10/08S
	630	12	6	34	19,5	50,5	22	24	17	C-GR12/06SX	C-GR12/06ZS	C-GR12/06S
			8	34	19,5	50,5	22	24	19	C-GR12/08SX	C-GR12/08ZS	C-GR12/08S
		10	34	19	51	22	24	22	C-GR12/10SX	C-GR12/10ZS	C-GR12/10S	
		14	36	20,5	54,5	24	27	22	C-GR14/10SX	C-GR14/10ZS	C-GR14/10S	
		14	36	20,5	54,5	24	27	24	C-GR14/12SX	C-GR14/12ZS	C-GR14/12S	
		16	36	20	54,5	27	30	24	C-GR16/12SX	C-GR16/12ZS	C-GR16/12S	
		16	38	21,5	58	27	30	27	C-GR16/14SX	C-GR16/14ZS	C-GR16/14S	
	420	20	10	40	22	59,5	32	36	22	C-GR20/10SX	C-GR20/10ZS	C-GR20/10S
			12	40	22	59,5	32	36	24	C-GR20/12SX	C-GR20/12ZS	C-GR20/12S
		16	42	23	63	32	36	30	C-GR20/16SX	C-GR20/16ZS	C-GR20/16S	
		25	46	25,5	68	41	46	30	C-GR25/16SX	C-GR27/16ZS	C-GR27/16S	
		25	48	25,5	71	41	46	36	C-GR25/20SX	C-GR25/20ZS	C-GR25/20S	
		30	50	26	74	46	50	36	C-GR30/20SX	C-GR30/20ZS	C-GR30/20S	
		30	52	26,5	77	46	50	46	C-GR30/25SX	C-GR30/25ZS	C-GR30/25S	
38		59	29,5	87	55	60	50	C-GR38/30SX	C-GR38/30ZS	C-GR38/30S		

Imaginile sunt orientative

Ne rezervăm dreptul de a efectua modificări de construcție, dimensionale și de material.

Pneumatică / Elemente de conectare și cuplaje / Fitinguri inel de tăiere / Fitinguri inel de tăiere - oțel placat cu zinc ISO 8434-1 (DIN 2353) / Racord reductor drept serie C-GR

