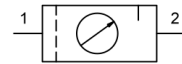


## Maintenance unit G3/8" Series Gold MU304



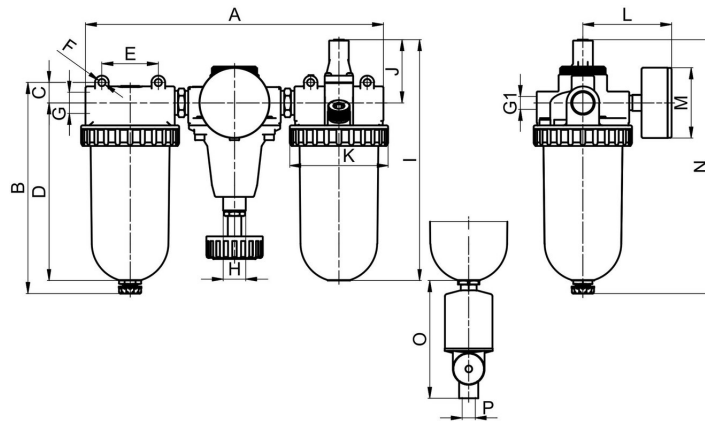
Design type	Diaphragm pressure regulator with secondary venting, Centrifugal force principle filter, Sintered filter element, Proportional lubricator, Oil filling possible under pressure
Connection	G3/8" according to ISO228/1
Materials	Housing Zinc die casting, Oil and condensate reservoir Polycarbonate or Metal
Function	Pressure regulation with filtration and oil lubrication of the compressed air
Filter element	40µm
Mounting type	Installation in piping system or Wall mounting using mounting bracket
Mounting position	vertical, Drain screw bottom
Medium	Compressed air
Oil recommendation	HP32A (Temperature range 0...50°C), NR32 (Temperature range -35...85°C)
Oil metering	1...2 drops/min at QN = 1000 NI/min
Medium temperature	with plastic bowl 0...+60°C, with metal bowl 0...+60°C (with appropriately conditioned compressed air -10...+60°C)
Ambient temperature	with plastic bowl 0...+60°C, with metal bowl -10...+60°C
Inlet pressure	1,5...16bar or rather 1,5...20bar according to table, with automatic drain valve 1,5...16bar
Control ranges	0,5...10bar and 0,5...16bar with metal bowl (0,5 ...3/ 0,5...6 on request)
Flow direction	is marked by an arrow
Scope of delivery	including pressure gauge
Special version	Inlet pressure 25bar



Order code

MU304 - 38 H - 0,5/10 - P - A	
Connection	3/8" 38
Flow rate	Standard (Leave blank) high flow rate H
Pressure range	0,5...10bar 0,5/10 0,5...16bar 0,5/16
Reservoir	Plastic reservoir (Leave blank) Plastic reservoir with protective cage P Metal container M
Drain valve	semi-automatic drain valve (Leave blank) automatic drain valve A1

Dimensional drawing



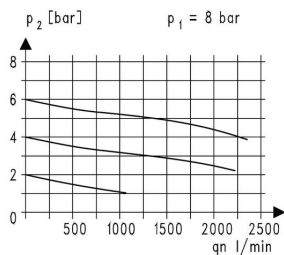
automatic drain valve

Connection G	A	B	C	D	E	F	G1	H	I	J	K	L	M	N	O	P
G3/8"	233	161,5	16	130,5	50	6,2	G1/4"	M20x1,5	180,5	51	76,5	73	50	196,5	104	G1/4"

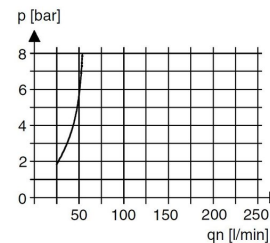
Connection	Flow rate at 6 bar* [Nl/min]	max. inlet pressure [bar]	Pressure range [bar]	Weight [approx. kg]	Type
G3/8"	1400	16	0,5...10	1,9	MU304-38H-0,5/10
G3/8"	1400	16	0,5...10	2,2	MU304-38H-0,5/10-P
G3/8"	1400	20	0,5...16	2,2	MU304-38H-0,5/16-M

\*Flow rate data at an inlet pressure of 8 bar, an outlet pressure of 6 bar and a pressure drop of 1 bar

Flow diagram, Oiler response threshold



Flow diagram



Oiler response threshold



## Accessories

Designation	Type
Holding angle bracket with neck nut for pressure regulators M20x1,5	MMP04-38/10
Holding angle bracket with 2 screws for lubricators and filters	MMB04-38H/10

Illustrations non-binding

Design, dimensional and material changes reserved

[Pneumatics](#) / [Regulators, filters and lubricators](#) / [Other materiales - P07](#) / [Other materiales - P07](#) / [\[MU304-38H-0,5/10-M-F5-YA\] MU304-38H-0,5/10-M-F5-YA](#)

Version 4

138942 / Generated 2026/23 EN

MADE IN EUROPE

+43 512 52076

austria@stasto.eu

© STASTO Automation KG

[www.stasto.com](http://www.stasto.com)

Open series online

Page 3 / 3

