






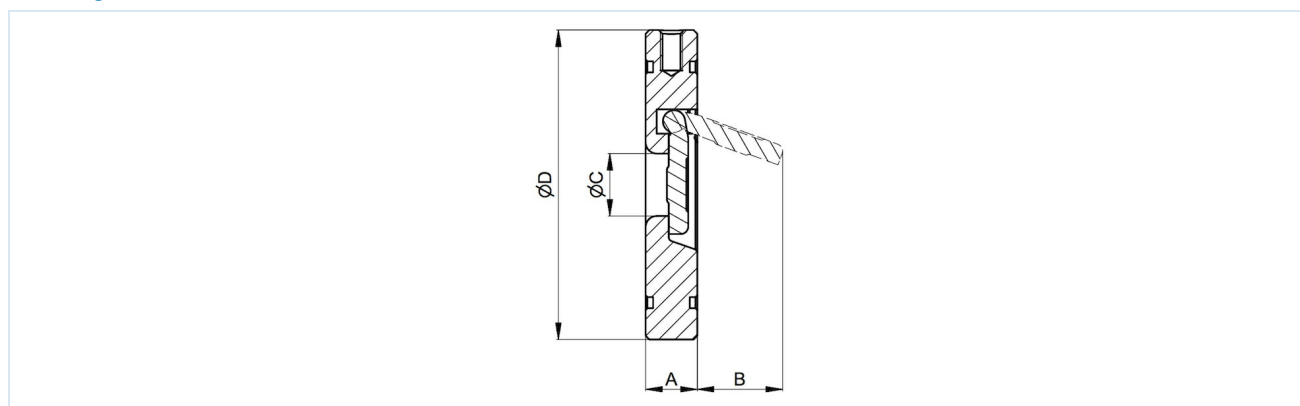
Openingsdrukken in [mbar]:

Nominale diameter DN[mm]	Stroomrichting CS		Stroomrichting CM		
					
DN40 - DN150	13	16	23	26	10
DN200 - DN300	19	22	32	35	10

Toepassingsmogelijkheden van de afzonderlijke afdichtingsmaterialen:

Afdichting	Temperatuurbereik [°C]	Toepassing
NBR	-20...+120	neutrale gassen en vloeistoffen
EPDM	-40...+130	Heet water, Stoom, Zuurstof
FKM	-50...+260	Benzine, Diesel, Lucht, Oliën, Water, neutrale gassen en vloeistoffen
PTFE	-50...+260	agressieve media, Stoom

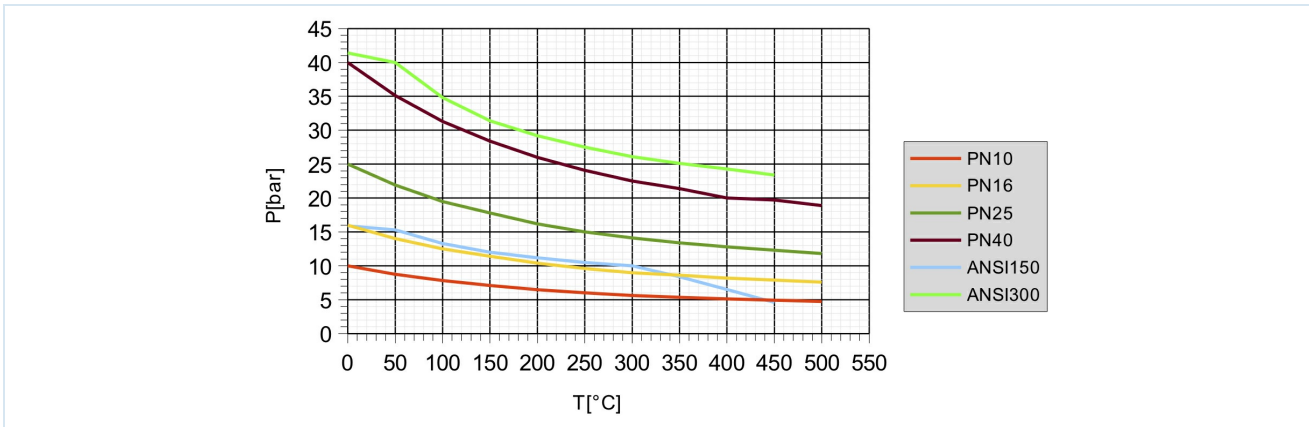
Afmetingen



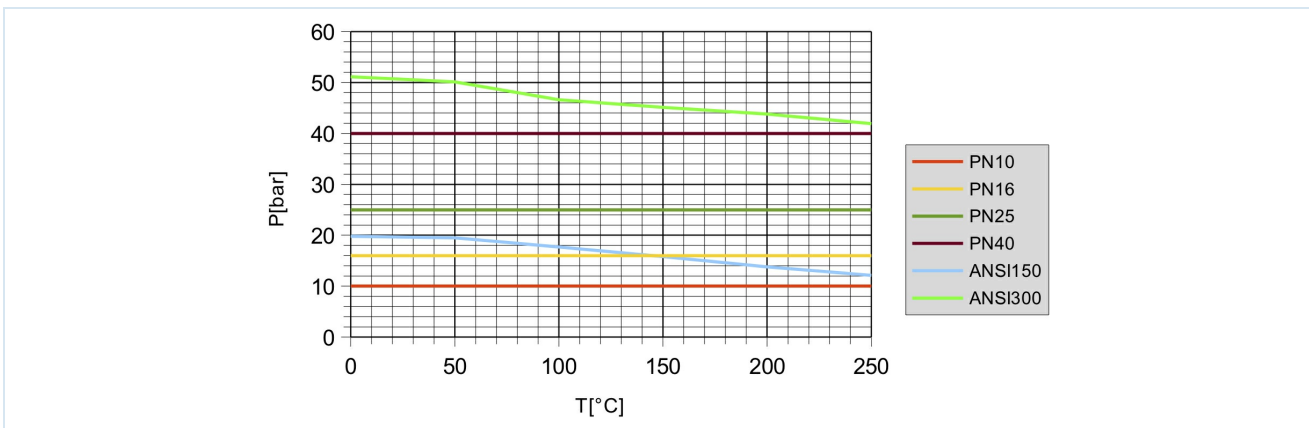
Nominale diameter DN[mm]	Flensnominale druk EN1092	Flensnominale druk ANSI B16.5	A	B	ØC	ØD	Kvs [m³/h]	Gewicht [ca. kg]	Type
32	PN10/16/25/40	ANSI300	14	20	17	84	7,5	0,5	C.-.....-32
40	PN10/16/25/40	ANSI300	14	30	22	95	17,2	0,7	C.-.....-40
50	PN10/16/25/40	ANSI300	14	35	32	109	25,4	0,9	C.-.....-50
65	PN10/16/25/40	ANSI300	14	48	40	129	42,2	1,2	C.-.....-65
80	PN10/16/25/40	ANSI300	14	60	54	144	67,0	1,5	C.-.....-80
100	PN10/16	-	18	78	70	164	246,5	2,4	C.-.....-100
125	PN10/16	ANSI150	18	98	92	195	547,4	3,4	C.-.....-125
150	PN10/16	ANSI150	20	117	112	220	724,0	4,6	C.-.....-150
200	PN10/16	-	22	160	154	275	1039,0	8,0	C.-.....-200
250	PN10/16	-	26	200	200	330	1896,0	13,3	C.-.....-250
300	PN10	-	32	235	240	380	2207,0	20,9	C.-.....-300



Druk-temperatuurdiagramm Roestvrij staal



Druk-temperatuurdiagramm Staal



Afbeeldingen niet bindend
 Constructie-, maat- en materiaalwijzigingen voorbehouden

