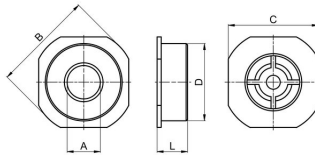


Check valve Series CH058-E-0H

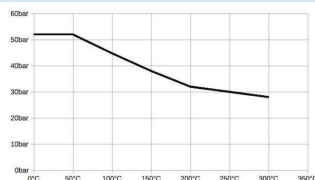


Design type	Wafer check valve, metal-to-metal sealing, Installation length according to DIN EN558-1-R49
Tightness	corresponding DIN3230 BN3
Connection	Flange according to EN1092
Flange type	PN6-PN40, ANSI150-300
Materials	Body stainless steel 1.4408, Disc stainless steel 1.4404, Spring Stainless steel 1.4401, Seal EPDM
Medium temperature	-35...+130°C
Operating pressure	max. 52bar up to medium temperature 50°C, Permissible operating pressure for higher temperatures see pressure-temperature diagram
Mounting type	Installation in rigid piping system
Mounting position	horizontal or vertical
Application range	Fluids and gases of group 1 and 2 in accordance with PED 2014/68/EU that do not attack the materials used.
Special version	oil- and grease-free version for hydrogen and oxygen
Approval	Mill test certificate 3.1



DN[mm]	A	B	C	D	L	Kv value [m3/h]	Weight [approx. kg]	Type	
25	24	73	65	55,5	22	6,8	0,26	CH058-25-E-3C0H01	
3301.V91-RM05	3301.V91-RM08	3302.V91-RM05	3302.V91-RM08	3303.V91-RM05	3303.V91-RM08	3304.V91-RM05	3304.V91-RM08	3305.V91-RM05	3305.V91-RM08
3306.V91-RM05	3306.V91-RM08	3307.V91-RM05	3307.V91-RM08	3308.V91-RM05	3308.V91-RM08	3309.V91-RM05	3309.V91-RM08	3310.V91-RM05	3310.V91-RM08

Pressure-temperature diagram:



Illustrations non-binding Design, dimensional and material changes reserved

