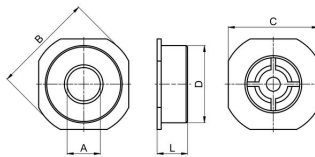


## Check valve Series CH058-E

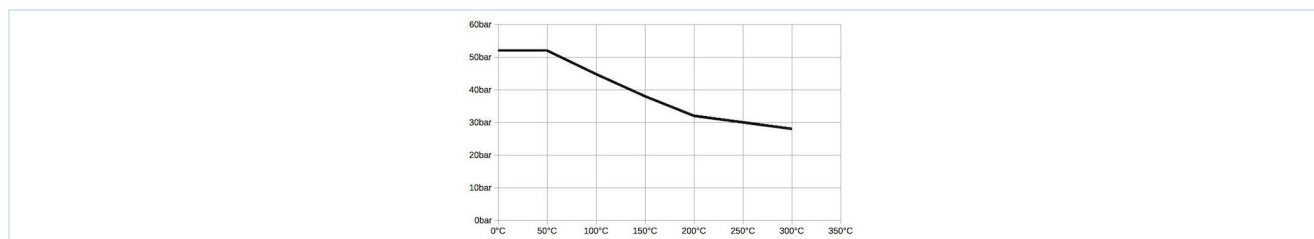


Design type	Wafer check valve, metal-to-metal sealing, Installation length according to DIN EN558-1-R49
Tightness	corresponding DIN3230 BN3
Connection	Flange according to EN1092
Flange type	PN6-PN40, ANSI150-300
Materials	Body stainless steel 1.4408, Disc stainless steel 1.4404, Spring Stainless steel 1.4401, Seal EPDM
Medium temperature	-35...+130°C
Operating pressure	max. 52bar up to medium temperature 50°C, Permissible operating pressure for higher temperatures see pressure-temperature diagram
Mounting type	Installation in rigid piping system
Mounting position	horizontal or vertical
Application range	Fluids and gases of group 1 and 2 in accordance with PED 2014/68/EU that do not attack the materials used.
Approval	Mill test certificate 3.1



DN[mm]	A	B	C	D	L	Kv value [m3/h]	Weight [approx. kg]	Type
15	15	53	45	42	16	3,0	0,11	CH058-15-E-3C01
3301.V91-RM03 3302.V91-RM03 3303.V91-RM03 3304.V91-RM03 3305.V91-RM03 3306.V91-RM03 3307.V91-RM03 3308.V91-RM03 3309.V91-RM03 3310.V91-RM03								

### Pressure-temperature diagram:



Illustrations non-binding  
 Design, dimensional and material changes reserved

